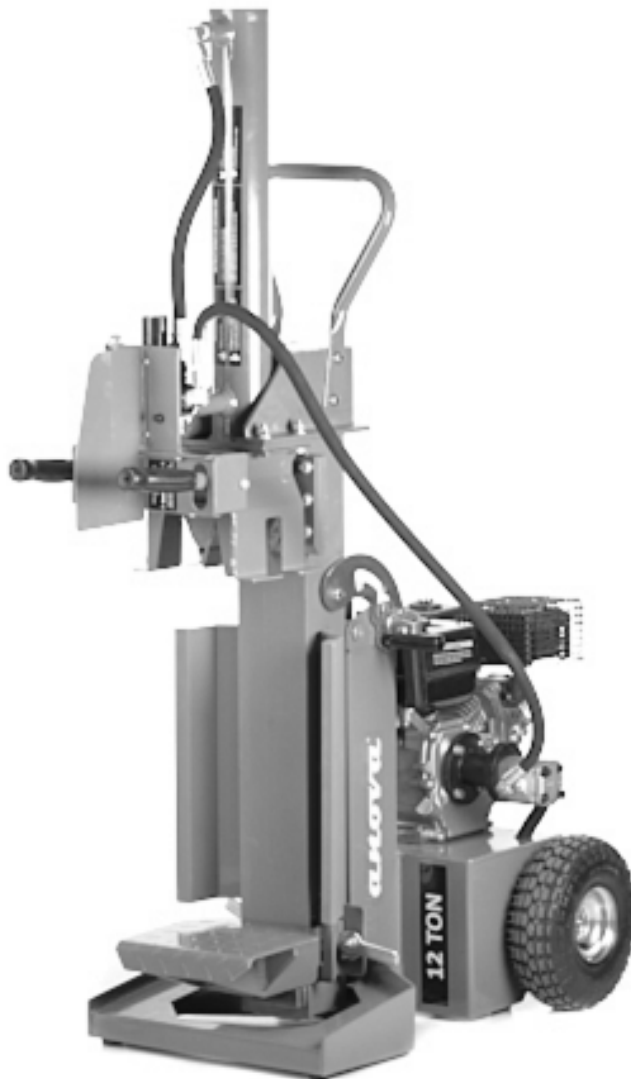


Instructions - User Manual

WOOD BREAKER RLT12GVH



ALNOVA[®]

Millasur, SL.

Rúa Eduardo Pondal, nº 23 - Pol. Ind. Sigüeiro

15688 - Oroso - A Coruña 981 696465 www.millasur.com

CE

ANOVA thanks you for choosing one of our products and guarantees the assistance and cooperation that has always distinguished our brand over time. This machine is designed to last for many years and to be of great use if used in accordance with the instructions contained in the user manual. We therefore recommend that you read this instruction manual carefully and follow all our recommendations.

For more information or doubts, you can contact us through our web supports such as www.anovamaquinaria.com.

INFORMATION ABOUT THIS MANUAL

Please pay attention to the information provided in this manual and on the appliance for your safety and that of others.

- This manual contains instructions for use and maintenance.
- Take this manual with you when you go to work with the machine.
- The contents are correct at the time of printing.
- The rights to make changes at any time are reserved without affecting our legal responsibilities.
- This manual is considered an integral part of the product and must remain with it in case of loan or resale.
- Ask your dealer for a new manual in case of loss or damage.

READ THIS MANUAL CAREFULLY BEFORE USING THE MACHINE



To ensure that your machine provides the best results, please read the usage and safety regulations carefully before using it.



OTHER WARNINGS:


Incorrect use could cause damage to the machine or other objects.

The adaptation of the machine to new technical requirements could cause differences between the content of this manual and the purchased product.

Read and follow all instructions in this manual. Failure to follow these instructions could result in personal injury

ANOVA[®]

	 CAVEAT
	Please read this manual carefully. Serious injury or death can occur if safety instructions are not followed.

	The engine is shipped without oil. -Before starting the engine, fill with SAE 10W-30 motor oil. -See engine manual for engine oil capacity.
	The hydraulic oil tank is shipped without oil. - When adding oil, check that the oil level is 1 from the top of the hydraulic reservoir (not including the filler neck). Closely inspect all components of the log splitter. -If there are damaged components, contact the shipping company that delivered the unit and file a claim.

Danger Signal Word Definitions










	This is the safety alert symbol. It is used to alert you to potential personal injury hazards. Obey all safety messages that follow this symbol to avoid possible injury or death.
 DANGER	DANGER (red) indicates an imminently hazardous situation which, if not avoided, will result in death or serious injury.
 WARNING	WARNING (orange) indicates a potentially hazardous situation which, if not avoided, could result in death or serious injury.
 CAUTION	CAUTION (yellow) indicates a potentially hazardous situation which, if not avoided, may result in minor or moderate injury.
CAUTION	CAUTION (yellow) used without the safety alert symbol indicates a potentially hazardous situation which, if not avoided, may result in property damage.

Table of Contents

 Import security rules.....	1 -two
 Machine Component Definitions.....	3
 Operating instructions.....	4
 Maintenance and storage.....	5
Problem solving.....	6
Specs.....	7
Assembly instructions.....	8-11
Quartering.....	12


! Important safety rules



	<p style="text-align: center;">! CAVEAT</p> <p>1.) Read this manual completely. Serious injury or death can occur if safety instructions are not followed. Everyone who operates the log splitter must read and fully understand all safety rules, operating instructions, and maintenance instructions and maintenance instructions. You must be 16 years of age or older to operate this machine. Keep untrained people away. -Stop engine before leaving log splitter unattended.</p> <p>2.) Danger of crushing. The wedge can cut skin and break bone. Keep both hands away from the wedge and end plate. - Serious accidents can occur when other people are allowed into the work area. Keep everyone else out of the work area while operating the control valve. -Do not wear loose clothing. It can become entangled in moving parts of the log splitter. -Only use the log splitter in daylight so you can see what you are doing.</p> <p>3.) flying objects. Pieces of logs can fly while splitting. Wear safety glasses. Serious eye injury may occur.</p> <p>4.) Skin injection hazard. High-pressure fluid can be injected under the skin and cause serious injury, including amputation. -Make sure all connections are tight before applying pressure. Relieve system pressure before performing maintenance. -Do not check for leaks by hand. Instead, use a piece of cardboard to check for leaks. -If skin injection occurs, seek "Surgical Treatment" immediately.</p>
------------------------------------------------------------------------------------	---------------------------------------------------------------------------------------------------------------------------------------------------------------------------------------------------------------------------------------------------------------------------------------------------------------------------------------------------------------------------------------------------------------------------------------------------------------------------------------------------------------------------------------------------------------------------------------------------------------------------------------------------------------------------------------------------------------------------------------------------------------------------------------------------------------------------------------------------------------------------------------------------------------------------------------------------------------------------------------------------------------------------------------------------------------------------------------------------------------------------------------------------------------------------------------------------------------------------------------------------------------------------------------------------------------------------------------------------------------------------------------------------------------------------------------------------------------------------------------------------------------------------------------------------------------------------

Save these instructions

! Important safety rules

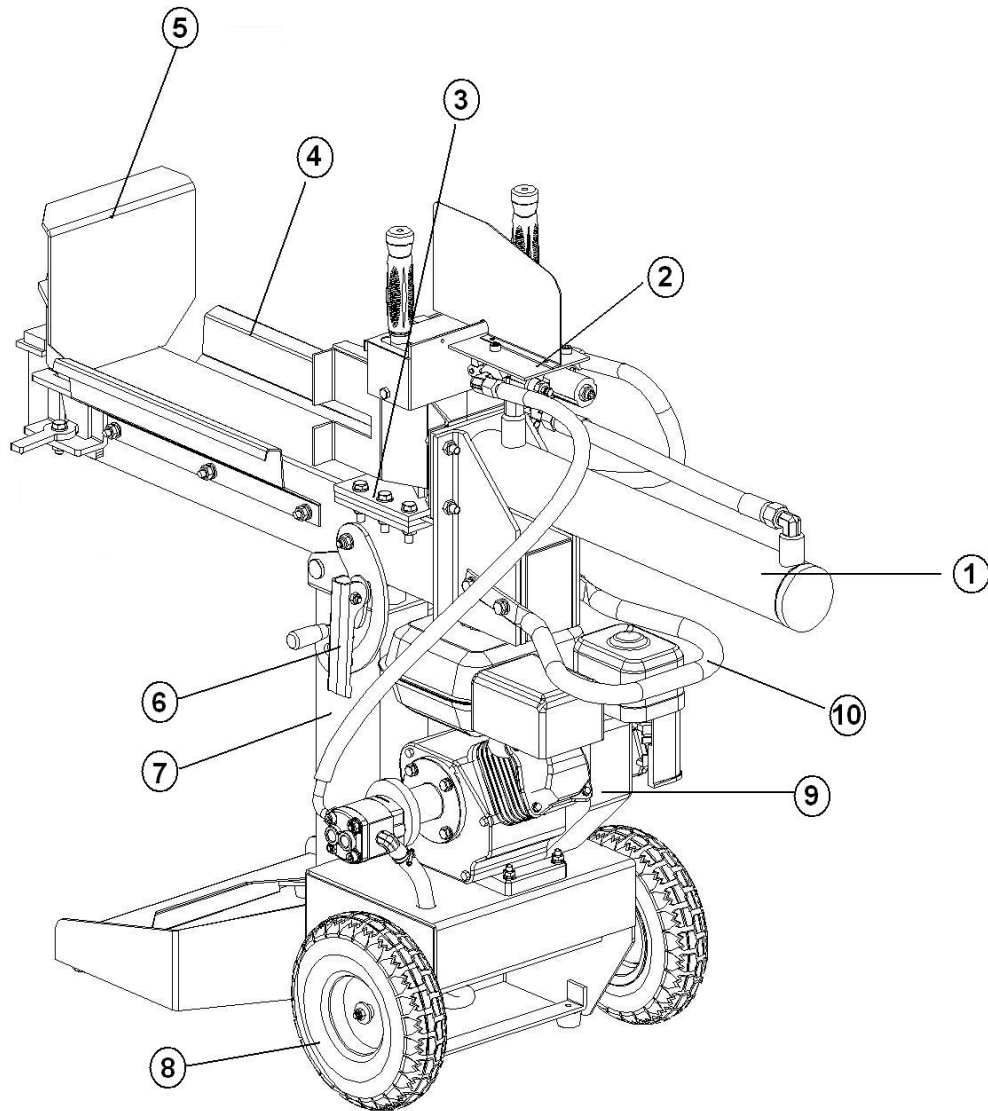
	<p style="text-align: center;">! CAVEAT</p>
-------------------------------------------------------------------------------------	----------------------------------------------------

	<p>6.) Fire and explosion risk. Hot exhaust gases from the engine can cause a fire. Gasoline is highly flammable and explosive. You can be seriously burned or injured when handling fuel.</p> <ul style="list-style-type: none"> - Place the muffler at least 7 feet away from combustible objects. - Before adding fuel, stop the engine and keep heat, sparks and flames away. Do not add fuel when the engine is running or is still hot. Do not smoke near the engine. - Do not pump fuel directly to the engine at the service station. Static charge can build up and ignite fuel. Use a UL approved fuel container to transfer gas to the engine. Clean up fuel spills immediately. - Only store and handle fuel outdoors. Gasoline vapors can ignite if they accumulate inside an enclosure. An explosion may occur. - Do not change or add to exhaust systems. Fire can result. - Do not change or add fuel tanks or fuel lines. Fire can result. - Before each use, check the fuel tank and fuel lines for leaks. Any fuel leak is a fire hazard. Repair any fuel leaks before starting the engine. - During transportation, take precautions to ensure that the machine does not tip over and cause a fire hazard from fuel leakage.
	<p>7.) Respiratory hazard. Poisonous engine fumes can kill you. Do not operate indoors, even if it is ventilated. For outdoor use only.</p>

	<p style="text-align: center;"> CAUTION</p> <p>1.) Hot muffler. You can be burned by a silencer. Do not touch.</p>
-------------------------------------------------------------------------------------	-------------------------------------------------------------------------------------------------------------------------------------------------------------------------------------------------------------------------------

save these instructions

Machine Component Definitions



- 1.) Hydraulic cylinder.
- 2.) Control valve handle.
- 3.) Cradle.
- 4.) Trunk guide and protector.
- 5.) Lower trunk support.
- 6.) Blocking unit.
- 7.) Main body.
- 8.) Wheel.
- 9.) Motorcycles
- 10.) Handlebar.

! Instructions for use

Proper Log Splitter Operation

- 1.) Load a log onto the beam and against the wedge.
- 2.) Serious accidents can occur when other people are allowed into the work zone. Keep everyone else out of the work area while operating the control valve.
- 3.) Push the control valve handle FORWARD with both hands to split the log.
- 4.) Push the control valve handle BACKWARD with both hands to return the wedge to its original position.
- 5.) Clean split wood from work area.



! CAVEAT

Crushing hazard.

The wedge can cut skin and break bone. Keep both hands away from the wedge and slide beam.

- Serious accidents can occur when other people are allowed into the work area. Keep everyone else out of the work area while operating the control valve.
- Do not wear loose clothing. It can become entangled in moving parts of the log splitter.
- Only use the log splitter in daylight so you can see what you are doing.

! Maintenance and storage

! Before performing maintenance, the log splitter must be placed in maintenance mode.

- 1.) Shut off the engine.
- 2.) Move control valve handle back and forth to relieve hydraulic pressure.

! After performing maintenance, make sure all guards, shields, and safety features are put back in place. Failure to heed this warning may result in serious injury.

See engine owner's manual for engine maintenance.

That	When	How
hoses	each use	Inspect exposed wire mesh and leaks. Replace all worn or damaged hoses before starting the engine.
Hydraulic fittings	each use	Inspect for cracks and leaks. Replace all damaged connections before starting engine.
Nuts and Bolts	each use	Check for loose screws
Beam	each use	Apply grease to the beam surface.
Mobile parts	each use	clean up debris


! CAUTION

Residual Hydraulic Power

The pressurized hydraulic fluid must release residual energy before performing any maintenance or repair work on the log processor. Hydraulic fluid can be highly pressurized even when the processor motor is off. Escaping hydraulic fluid under pressure can penetrate skin and cause serious injury.

To release residual hydraulic energy:

1. Turn off the engine
2. Move the control valves back and forth, from one travel limit to another, at least four times.
3. Hold the valve for three seconds at each travel limit.

	<p>! CAVEAT</p>
	<p>Skin injection hazard. High-pressure fluid can be injected under the skin and cause serious injury, including amputation. -Make sure all connections are tight before applying pressure. Relieve system pressure before performing maintenance. -Do not check for leaks by hand. Instead, use a piece of cardboard to check for leaks. -If an injection occurs in the skin, search immediately. "surgical treatment"</p>

Problem solving

Problem solving	
Problem	
Cylinder rod does not move	SOLUTION: A, D, E, H, J
Slow cylinder axis speed when extending/retracting	SOLUTION: A, B, C, H, I, K, L
Wood does not break or breaks extremely slowly	SOLUTION: A, B, C, F, I, K
Motor stalls during split	SOLUTION: G, L
Engine stalls under low load conditions	SOLUTION: D, E, L, M

Cause	Solution
A- Insufficient oil to pump	Check the oil level in the reservoir
B- Air in oil	Check the oil level in the reservoir
C- Excessive pump inlet vacuum	Check that the pump inlet hose is not blocked or kinked
D- Blocked hydraulic hoses	Flush and clean splitter hydraulics
E- Control valve blocked	Flush and clean splitter hydraulics
F- Low Control Valve Setting	Adjust the control valve with a pressure gauge
G- Control Valve High Setting	Adjust the control valve with a pressure gauge
H- Damaged control valve	Send control valve in for repair
I- Control valve internal leakage	Send control valve in for repair
J- Cylinder internal leak	Send control valve in for repair
K- Internally damaged cylinder	Send control valve in for repair
L- Motor control out of adjustment	Adjust idle control nuts
M- Motor is charging during idle mode	Use a shorter stem (20" or less) to allow the engine to rev before contact.

specs

Ram force: 12 ton.

Engine: 7HP

Gear pump: 2.1 GPM

Max Pressure: 3500PSI

Hydraulic tank capacity: 4.7 L

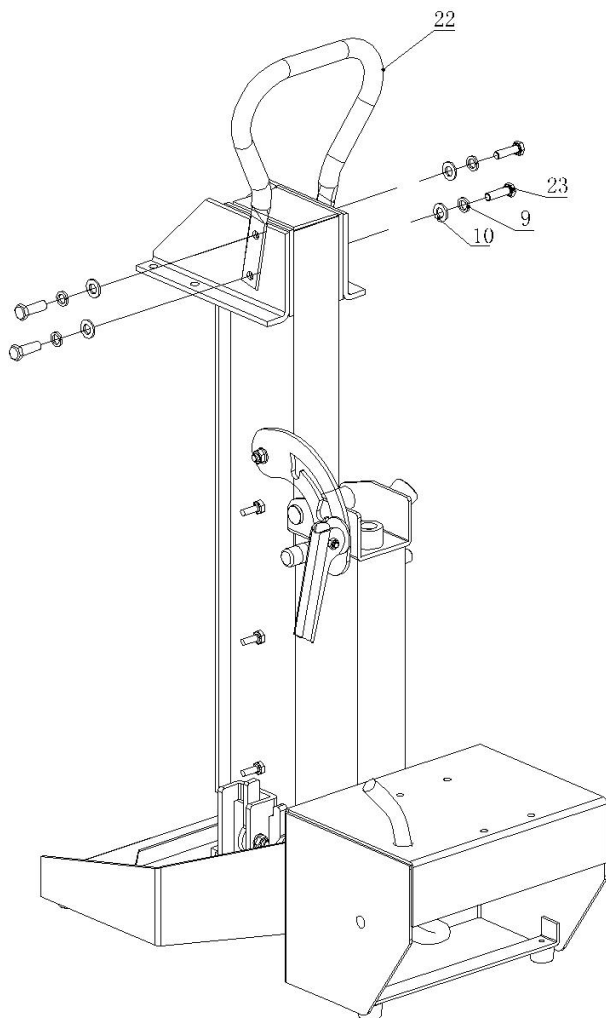
Max. Log opening: 52cm

The manufacturer reserves the right to make design improvements and/or specification changes at any time without incurring any obligation to install them on units previously sold.

ASSEMBLY STEPS

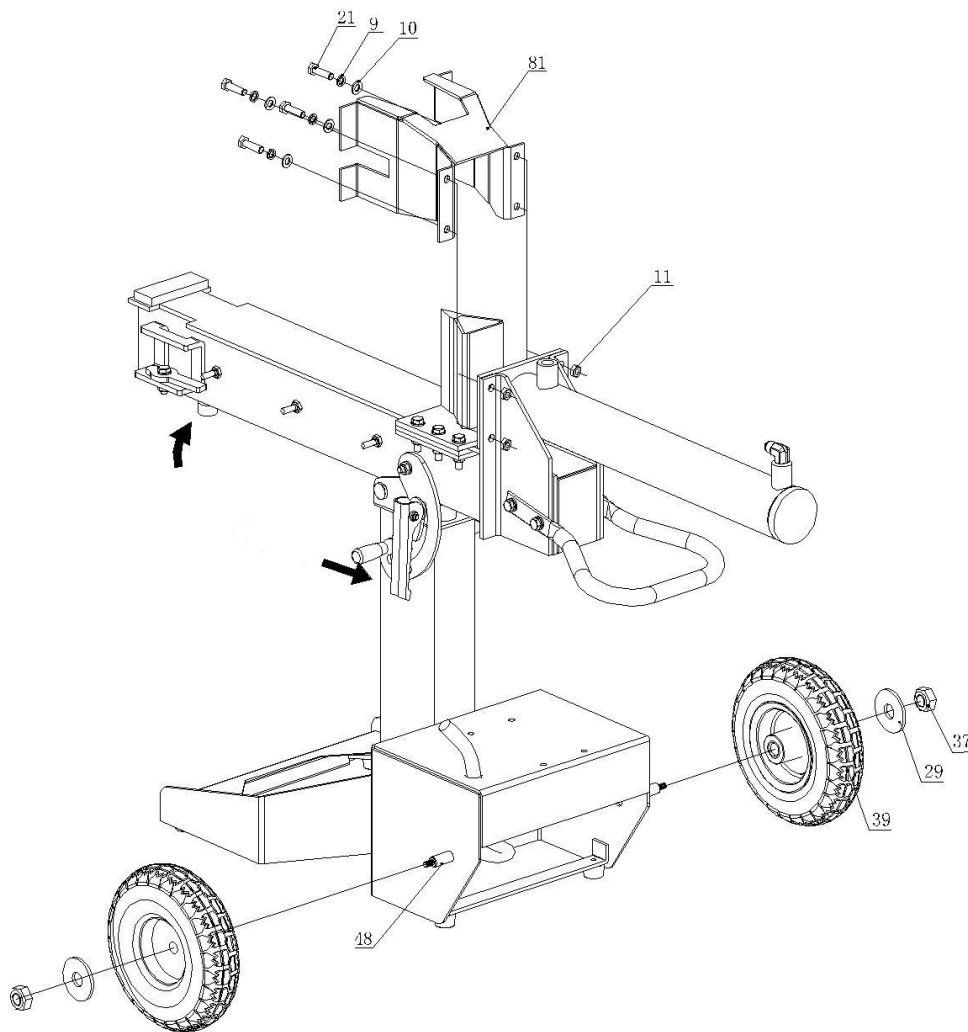
STEP 1: LOCK AND HANDLE ASSEMBLY

1. Attach handle (#22) to end of beam with bolt (#23), spring washer (#9), and washer (#10).



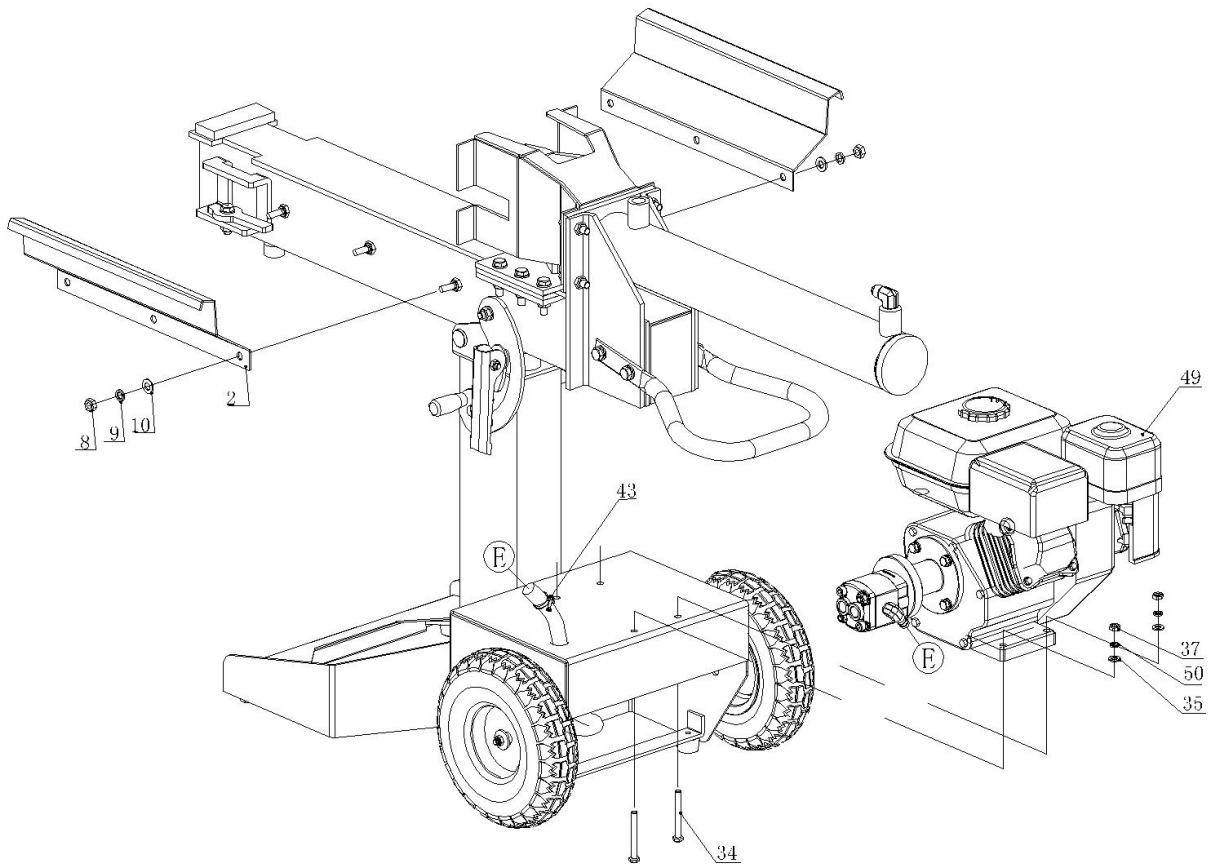
STEP 2: WHEEL AND CYLINDER ASSEMBLY

1. Adjust the beam to a horizontal position and fix it with the locking system.
2. Assemble cylinder and wedge guard to beam using hex bolt (#21), spring washer (#9), flat washer (#10) and nut #11.
3. Assemble the 2-Piece Casters (#39) to the main body using the Caster Axle (#48), Flat Washer (#29), and Nut (#37).



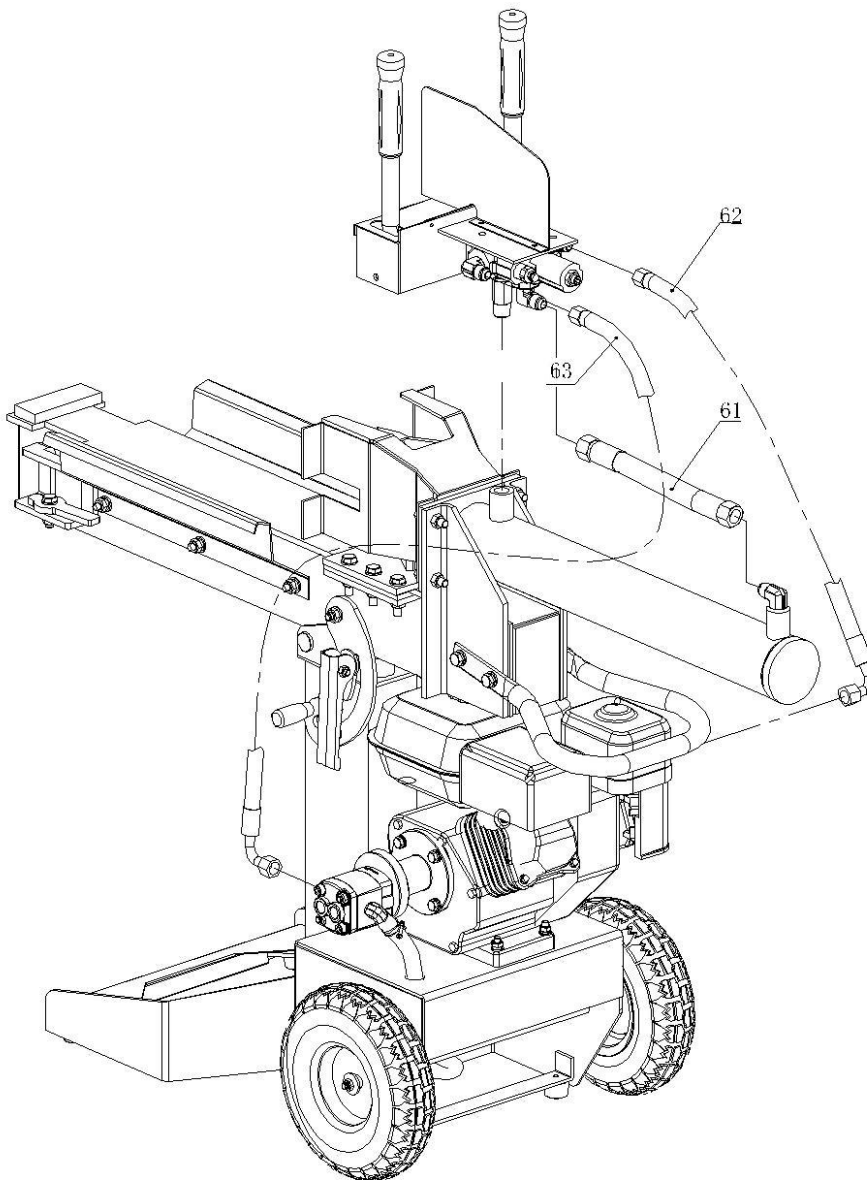
STEP 3: ENGINE REGISTRATION AND MOUNTING GUIDE

1. Assemble the left and right registration guide (#2 and using nuts (#8), spring washer (#9) and flat washer (#10)).
2. Attach motor assembly to main body using bolts (#34), flat washer (#35), spring washer (#50), and nuts (#37).

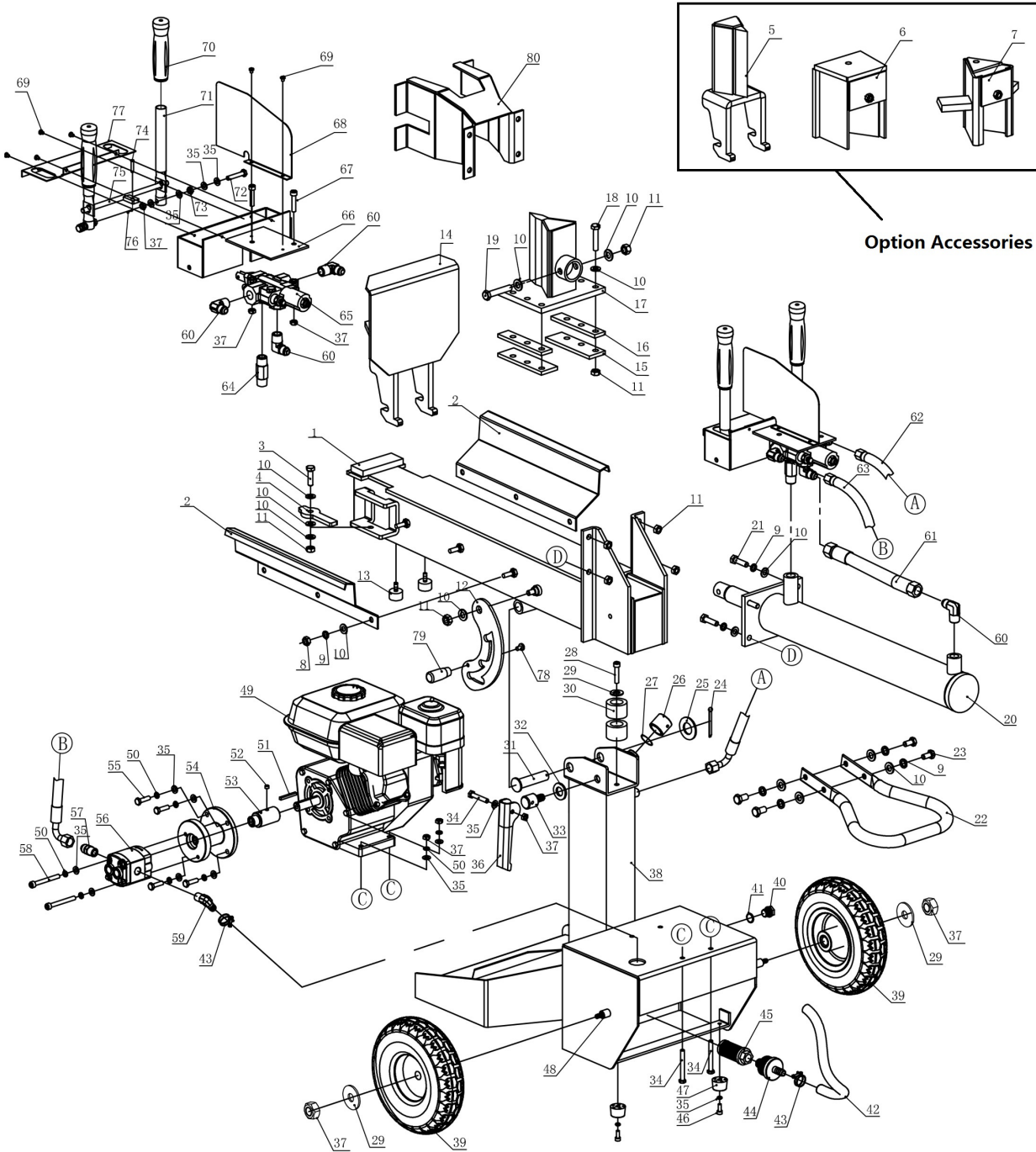


STEP 4: ASSEMBLY OF HYDRAULIC HOSES

1. Attach the hydraulic hose (#63). Using a high pressure hose (#63) to be assembled to the engine control valve and gear pump. Attach one end to the control valve inlet gasket (already attached at the factory) and the other end to the engine gear pump.
2. Using the other hydraulic hose (#62) to be assembled to the control valve and oil tank. Attach one end to the control valve outlet gasket (already attached at the factory) and the other end to the oil tank.
3. Then mount the Oil Tube to the gear pump, fix it with the clamp (#43).
4. Connect control valve and cylinder with oil tube (#61).



Exploded view



DECLARATION OF CONFORMITY (CE)

DISTRIBUTION COMPANY

MILLASUR, SL
RUA EDUARDO PONDAL, Nº 23 PISIGÜEIRO
15688 OROSO - A CORUÑA
SPAIN

ALNOVA

EC DECLARATION OF CONFORMITY

In compliance with the different CE directives, it is hereby confirmed that, due to its design and construction, and according to the CE mark printed by the manufacturer on it, the machine identified in this document complies with the relevant and fundamental health and safety requirements. of the aforementioned EC directives. This declaration validates the product to display the CE symbol.

In the event that the machine is modified and this modification is not approved by the manufacturer and communicated to the distributor, this declaration will lose its value and validity.

Machine name: **WOOD BREAKER**

Model: **RLT12GVH**

Recognized and approved standard to which it conforms:

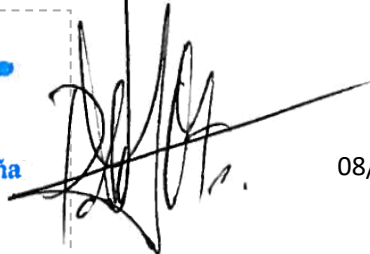
CE Directive: Machinery Directive 2006/42/EC (MD) and 2014/30/EU (EMC)

Tested according to:

EN609-1:2017, EN55012:2007 + A1:2009

Company seal

millasur
Rúa Eduardo Pondal, nº 23
Pol. Ind. Sigüeiro - 15688 Oroso - A Coruña
Tlf. 981 696465 / Fax. 981 690861



08/23/2018