

Walking tractor

MTC340

ALNOVA®

Instructions and user manual



EN

Millasur SLU
Rúa Eduardo Pondal, nº 23 - Pol. Ind. Sigüeiro
15688 - Oroso - A Coruña - 981 696 465 - www.millasur.com





Anova wishes to congratulate you for having chosen one of our products and guarantees you the assistance and cooperation that has always distinguished our brand over time.

This machine is designed to last many years and to be very useful if it is used according to the instructions contained in the user manual. We therefore recommend that you read this instruction manual carefully and follow all our recommendations.

For more information or questions, you can contact us through our web supports such as www.anova.es

INFORMATION ABOUT THIS MANUAL

Pay attention to the information provided in this manual and on the appliance for your safety and the safety of others.

- This manual contains instructions for use and maintenance.
- Take this manual with you when you go to work on the machine.
- The contents are correct at the time of printing.
- They reserve the rights to make alterations at any time without affecting our legal responsibilities.
- This manual is considered an integral part of the product and must remain with it in case of loan or resale.
- Ask your dealer for a new manual in case of loss or damage.

READ THIS MANUAL CAREFULLY BEFORE USING THE MACHINE



To ensure that your machine provides the best results, please read the use and safety regulations carefully before using it.

OTHER WARNINGS:

Incorrect use could cause damage to the machine or other objects.

The adaptation of the machine to new technical requirements could cause differences between the content of this manual and the purchased product.

Read and follow all instructions in this manual. Failure to follow these instructions could result in serious personal injury.

INDEX

- 1. SECURITY INSTRUCTIONS**
- 2. TECHNICAL SPECIFICATIONS**
- 3. PRODUCT DESCRIPTION**
- 4. INSTRUCTIONS FOR USE**
 - 4.1. Security recommendations
 - 4.2. Checks before use
 - 4.3. Start up
 - 4.4. Available accessories
- 5. MAINTENANCE AND STORAGE**
 - 5.1. Security recommendations
 - 5.2. General maintenance
 - 5.3. Storage
- 6. PROBLEM SOLVING**
- 7. WARRANTY**
- 8. ENVIRONMENT**
- 9. EXPLODED VIEW**
- 10. CE CERTIFICATE**

1. SECURITY INSTRUCTIONS

The tiller must be used exclusively for the work it has been designed for, so it must not be used for other uses. Do not use accessories other than those approved by the manufacturer and keep the content of this manual in mind at all times.

- Do not tilt or tip the tiller when it contains fuel or oil; these are products that can catch fire.
- Do not use any accessory such as the mower without first turning the handlebar 180°.
- Do not use accessory extension with cutter. This will get too close to the feet and therefore can be dangerous in addition to not complying with the regulations.
- Only one person can work with the tiller at a time. Avoid having other people near the work area.
- Do not use the machine on slopes greater than 25%.
- If the tiller has to be lifted, use a pallet, secure it properly and use a forklift.

Important

As we regularly improve our products, you may find slight differences between your machine and the descriptions in this manual. Modifications can be made to the machine without prior notice and without the obligation to update the manual, although the essential safety and operational characteristics will remain unchanged.

Note: Due to technical product updates, this document is subject to change without notice.

1.1. Safety rules

- Learn how to shut down and immobilize the tiller quickly if you need to.
- Familiarize yourself with the use of all levers and controls on the machine before you start using it.
- Before starting the tiller, clean all the work area of foreign objects (stones, wires, pieces of iron, etc.).
- Read and understand all labels, as well as all safety rules contained in this manual. Refuel and carry out all maintenance operations on the machine.
- Work safely. When working on slopes, work across, never up and down. Never operate on surfaces with more than a 25% incline. Never run with the machine.
- Turn off the engine before checking or repairing the machine. If you notice abnormal vibration while working, turn off the machine and carefully check the reason for it.
- Turn off your tiller before transporting the machine or making any adjustments to an attachment. Also do it before refueling.
- Frequently check all nuts and bolts, in order to keep them properly tightened and adjusted.
- Keep the machine away from dry grass or grease, both of which can cause fire.
- Gasoline is highly flammable:
 - o Store gasoline in containers approved for this purpose.
 - o Always refuel in open and sufficiently ventilated places.
 - o Always refuel with the engine off.
 - o Replace the exhaust pipe if it is damaged.
- Engine start:
 - o Disconnect all commands before starting the engine
 - o Keep feet away from tiller or other implements.

- When working with the machine:
 - o Always work with your walking tractor in daylight or with sufficient artificial light. Walk, never run.
- Do not use the machine when there are children or pets near the work area, even the elderly. Remember that the operator is responsible for any accident that may occur.
- Never allow children or inexperienced people to use the machine.
- When using the machine wear safety shoes. Never do it barefoot or with sandals.
- Never use the machine if any of its safety elements is defective or damaged.
- Never put hands or feet near any moving part of the machine.
- Never climb on or carry the machine while it is running.
- Never use your walking tractor in closed or poorly ventilated places. Exhaust gases are highly toxic.
- Do not change the engine revolutions. If you over-rev the engine, you run a high risk of an accident and also automatically void any warranty repair.
- Do not refuel with the engine running or if it is still hot.
- If you spill fuel when refueling, do not start the machine until you have cleaned it with a dry cloth and moved the machine away from the area of the spill.
- Do not store the machine with fuel in its tank in closed or poorly ventilated places.

2. TECHNICAL SPECIFICATIONS

MTC340	
Engine	Air cooling
Power	14HP
Fuel type	Gasoline
Boot type	Electric
Marches	3+3
Wheel size	5.00-10
Forward speed	1.18/2.7/3.5 km/h
Reverse speed	1.0/2.3/3.3km/h
PTO Rotation	990rpm
Working width	65cm
Working depth	15 - 20 cm
Working capacity	400 – 600 m ² /h
Gross weight	115kg
Net weight	95kg

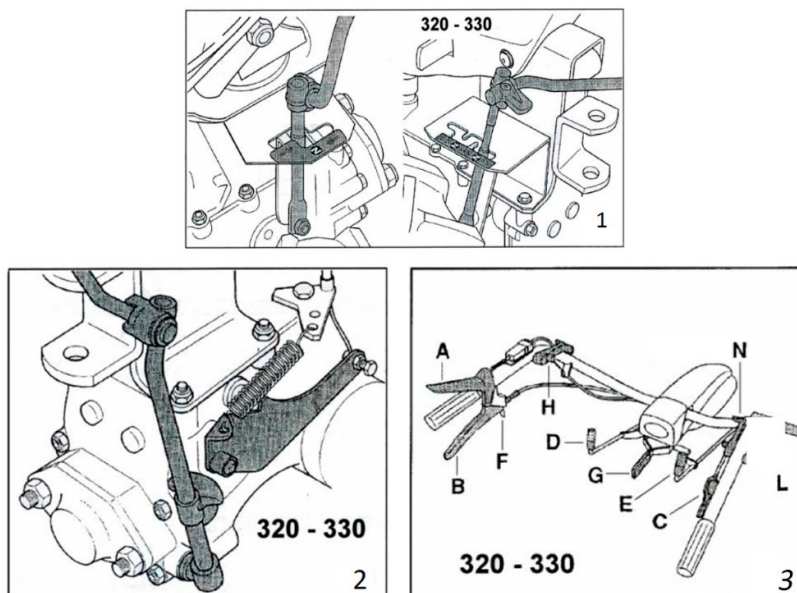
3. PRODUCT DESCRIPTION

3.1. Identification of its components

*See fig. 1, 2, 3.

- A. Engine stop lever: This part turns off the machine at the end of work or when an emergency occurs.
- B. Clutch lever.
- C. Throttle control.
- D. Gear change lever. The location of the different speeds is indicated on the selector plate.

- E. PTO. This walking tractor has a safety device that prevents the reverse gear from engaging while the tiller is turning.
- F. Clutch fixing clip.
- G. Handlebar height adjustment lever.
- L. Reverse lever. Before engaging reverse gear, always engage the clutch lever.
- N. Differential lock lever.



Important note: For all operations related to the use and maintenance of the engine not described in this manual, consult the corresponding manuals that form an integral part of all the documentation supplied with the machine.

4. INSTRUCTIONS FOR USE

4.1. Security recommendations

▲ Attention

The machine must only be used for the purpose for which it was designed. Remember that the user is responsible for damages and injuries to other people or objects. Do not tamper with or remove safety devices installed on the machine for safety. The user is responsible for damages or losses to third parties.

Before using the machine:

- Read the general safety regulations.
- Read the instructions for use carefully, make sure you are familiar with the controls and know how to quickly stop the engine if necessary.
- Never put your hands or feet next to or under rotating parts and always keep clear of the cutting outlet.

Do not use the machine when you are in a precarious state of health or under the influence of medication or any other substance that may reduce your reflex actions and your ability to concentrate. It is the responsibility of the user to assess the potential risk of the area where

the work is to be carried out, and to take all the necessary precautions to guarantee their own safety and that of others, especially on slopes or uneven, slippery and unstable terrain.

4.2. Checks before use

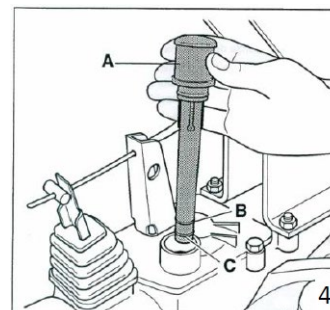
Check all machine components for worn, broken, or loose parts. Do not start the machine without first repairing these components.

Check the engine oil level following the instructions in the engine maintenance manual. To ensure proper lubrication, especially if we work on sloping terrain, the oil level must be at the maximum. Avoid spilling oil and use the quality and density of oil according to the manufacturer's instructions.

To check the oil level:

- Through the measuring plug A (fig.4) on the gearbox, make sure that the level is between the marks B (maximum) and C (minimum).

Refuel using a funnel that has a filter in order to remove impurities from the gasoline. Never refuel with the machine on. After these operations, your walking tractor will be ready to start work.



4.3. Start up

Make sure the gear lever as well as the PTO lever are disengaged.

To turn on the machine:

- Squeeze the engine stop lever A, squeeze the clutch lever B and fix them with the clip C (fig. 5).
- Place the throttle control half way.
- Position the engine controls for starting as indicated in the engine manual.
- Slowly pull the starter handle until you feel it engage. Then with a strong pull (fig.6). The starter handle must be operated with only one hand.

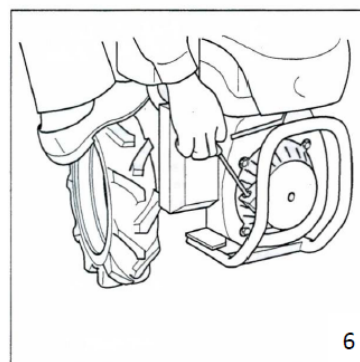
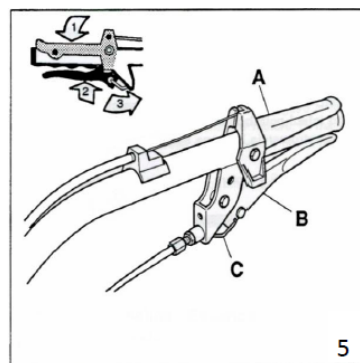
When the engine has started, keep it at minimum revs for a few minutes.

Squeeze the clutch lever (B) so that the fixing clip (C) is released, but without releasing the stop lever (A), since in this case the engine would stop (fig.5-6).

Select the speed you want, according to the work to be done. If the gear does not engage easily, release the clutch lever, squeeze it back in and try again. When this happens, slowly release the clutch lever until the machine starts to walk.

To engage the PTO for implements (cutter or cutter bar) squeeze the clutch, pull the PTO lever and slowly release the clutch lever again.

Please note that the PTO cannot be engaged at the same time as reverse gear on this machine. When we want to work with a mower, we have to turn the



handlebars and also disconnect the security system. Later, when we want to return to the walking tractor system.

▲ Important

When we want to return to the walking tractor system, it is important to reconnect the security system.

To stop the machine:

- Slow down, squeeze the clutch lever
- Disengage the gear by putting the lever in the “N” (neutral) position.
- Subsequently, disengage the power take-off and you can then release the stop lever (A), which will shut off the engine (fig.5).

4.4. Available accessories

*[*Optional]*

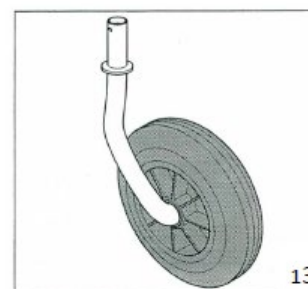
You can mount various accessories to your walking tractor such as: mower, snowplow, ridger, rod plough...

Make sure that any of these accessories is properly protected, is approved by the manufacturer and has the corresponding CE approval.

Always keep in mind that, to connect or disconnect any accessory, the engine of your walking tractor must be stopped and the lever stopped, in the off position.

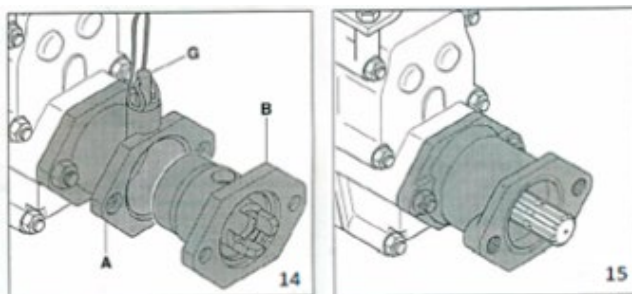
4.4.1. Transport wheel

This wheel that you can optionally purchase is placed on the milling cutter and is used to transport the machine without milling. (fig.13).



4.4.2. Quick connection tools

Optionally you can purchase this accessory that is used to connect implements such as cutter and mowing bar, in a quick way. Part A is attached to the machine and part B is attached to the implement (cutter or mowing bar). To connect them, part B is inserted into part A, fixing them later with pin G (see figures 14 and 15).



5. MAINTENANCE AND STORAGE

5.1. Security recommendations

Before cleaning or carrying out maintenance work, turn off the machine and read the corresponding instructions. Always wear suitable clothing in addition to work gloves for your safety.

Never use the machine with worn or damaged parts. Defective or worn parts should always be replaced, not repaired. Use only manufacturer-approved replacement parts. Unapproved parts can damage the equipment and affect your safety and the safety of others.

Never dispose of used oil, fuel, batteries or other contaminants in unauthorized locations.

5.2. General maintenance

▲ Important

Before each use, always check the oil and fuel levels for correct operation and avoid damage to the machine.

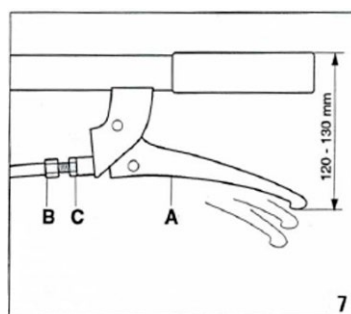
Proper maintenance and greasing will help you keep the machine in perfect working condition. Always try to keep it in these conditions, always checking the levels before starting your work.

Check the nuts and bolts of the machine and verify that they are properly tightened, especially those that hold the wheels, the cutter and those that hold the motor against the gearbox.

5.2.1. Clutch

Originally the position of the handle (A) (fig.7) is normal. With use, the cable always loosens slightly and then the handle closes, leaving less distance to the handlebars.

To avoid this, adjust the tensioner (B) by previously loosening the nut (C) a little.



5.2.2. Engine

To find out the engine maintenance intervals, see the instructions in the engine manual. As for the oil specifications, check it in the engine manual.

It is necessary to check the oil level every 4 working hours and change it every 50 hours.

Note: Use quality oil. This will help keep the engine in perfect working condition, as well as increase its life.

5.2.3. Oil bath air filter

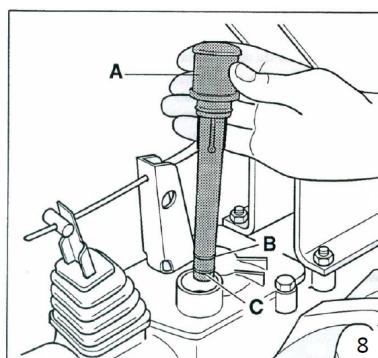
Both the air filter oil and the filter must be well maintained. Every 8 working hours, you should change the air filter oil and clean the filter. Use the same oil you have for the engine.

Note: It is important that if you work in very dusty conditions that you reduce the maintenance interval above. This aspect is essential for the life of the engine.

5.2.4. Gearbox

Check the gearbox oil level every 50 working hours and that everything is in perfect condition.

If at any time you see an oil stain under the machine (fig.8): With the machine in a horizontal position, remove the plug (A) and make sure that the oil is between the B (maximum) and C (minimum) marks. .



5.3. Storage

If your tiller is not going to be used for a long period of time, then you must take the following precautions:

- Drain the carburetor. For that, close the gasoline and let it work until it turns off by itself.
- Drain the engine oil.
- Lubricate the cylinder: To do this, remove the spark plug and introduce several tablespoons of oil through its hole and then pull the starter several times so that it spreads throughout evenly. Then put the spark plug back in its place.
- Thoroughly clean the exterior of the engine with compressed air.
- If you have a mower, grease the blades and put the protection on it later.

When you have everything ready, make sure that all the safety elements work perfectly (engine stop, reverse gear/PTO safety element, clutch lever retaining clip, stop lever, etc.).

6. PROBLEM SOLVING

⚠ **Caveat**

Do not perform any maintenance action with the engine running.

1. The gasoline engine does not start. It can be the following causes:
 - There is no gasoline in the tank.
 - The air control has not been closed (with a cold engine).
 - It has the air control closed (with the engine warm).
 - The carburetor is flooded with gasoline.
 - The gas cap has a clogged breather.
 - The carburetor fuel filter is clogged.
 - The carburetor jets are dirty. If so, unscrew them and clean them.
 - Check the spark plug. Remove the spark plug, reconnect the wire and ground against a metal part of the engine, pull the starter handle. You should see a spark between the two electrodes and if not, replace the spark plug.
2. Speeds do not engage:
 - Adjust the clutch cable until it is snug (as explained in the maintenance section).

Note: If you have any questions or problems persist after performing the above operations, contact your dealer or service center.

7. WARRANTY

If your product suffers from a manufacturing defect during the established warranty period, contact or go to your point of sale directly with the necessary documentation.

Your purchase invoice must be kept as proof of the purchase date. Your tool must be returned to your dealer in an acceptable and clean condition, in its original molded case, if applicable to the unit, accompanied by your appropriate proof of purchase.

7.1. Warranty period

The legal warranty period for the product begins on the original date of purchase by the first initial buyer and its duration will be that established by the Royal Decree-Law for the protection of consumers and users in situations of social and economic vulnerability for the year corresponding to the time of purchase of the product.

Some countries do not allow limitations on how long an implied warranty lasts or do not allow the exclusion or limitation of consequential or incidental damages, in which case the above limitation and exclusion may not apply to you. This warranty gives you specific legal rights, and you may also have other rights which vary from state to state or country to country.

7.2. Exclusions

This warranty does not cover product damage or performance problems caused by:

- Natural wear and tear from use.
- Misuse, neglect, careless operation or lack of maintenance.
- Defects caused by incorrect use, damage caused by manipulations carried out by personnel not authorized by Anova or use of non-original spare parts.
- Defects of normal wear parts, such as bearings, brushes, cables, plugs or accessories such as drills, bits, saw blades, etc.
- Damage or defects resulting from abuse, accidents or alterations.
- Incorrect use and storage (explicit reference that the rules described in the operating instructions have not been followed).
- Customer wear (for example, broken saw blades, worn carbon brushes, etc.).
- Secondary wear and damage due to lack of maintenance, repair, lubricants (for example, damage from overheating due to blocked cooling slots, bearing damage as a result of dirt, frost damage, etc.)
- Damage as an obvious result of overuse/overloading.
- Damage caused by inappropriate supplies (eg wrong fuel)
- Load-induced failure of housing components or accessories due to abnormal stress
- Load-induced deformation of housing components or accessories due to abnormal stress.
- Damage resulting from the operation of supplies that are overfilled or leaking due to improper storage, in proper cleaning agents or other damaging chemicals.
- Damage due to improper exposure to extreme temperatures (for example, freeze fractures, thermal distortion of components, etc.)
- Damage from permanent exposure to ultraviolet radiation.
- Damage caused by improper maintenance.
- Any damage caused by non-compliance with the instruction manual
- Any product that has been attempted to be repaired by an unqualified professional.
- Any product connected to an inadequate power source (amps, voltage, frequency).
- Any damage caused by external influences (water, chemicals, physics, shock) or foreign substances.
- Use of inappropriate accessories or parts.
- It does not include defects of normal wear parts, nor does it cover damages or defects resulting from abuse, accidents or alterations, nor transportation costs.

Also, the warranty is void if the product has been altered or modified, or if the trademark/serial number on the machine has been defaced or removed.

Routine maintenance, tune-ups, adjustments or normal wear and tear are not covered under this warranty.

This manual does not cover all possible situations regarding warranty exclusions, for more information contact your nearest Anova dealer.

7.3. In case of incident

The guarantee must be correctly completed with all the information requested, and accompanied by the purchase invoice.

Anova reserves the right to deny any claim where purchase cannot be verified or where it is clear that the product was not maintained properly (maintenance, vents cleaned, lubrication, carbon brushes regularly maintained, cleaning, storage, etc.). .

Private use is understood as personal domestic use by a final consumer. Instead, commercial use means all other uses, including uses for commercial, income-generating, or rental purposes. Once the product has been used for commercial use, it will hereafter be considered a commercial use product for the purposes of this warranty.

These are our standard warranty terms, but occasionally there may be additional warranty coverage not determined at the time of publication. For more information, contact your nearest official Anova distributor or by visiting www.millasur.com.

Warranty service is only available through official Anova dealers. You can locate your nearest distributor on our distributor map at www.anova.es.

8. ENVIRONMENT



Protect the environment. Recycle the oil used by this machine by taking it to a recycling center. Do not pour used oil into drains, land, rivers, lakes or seas.



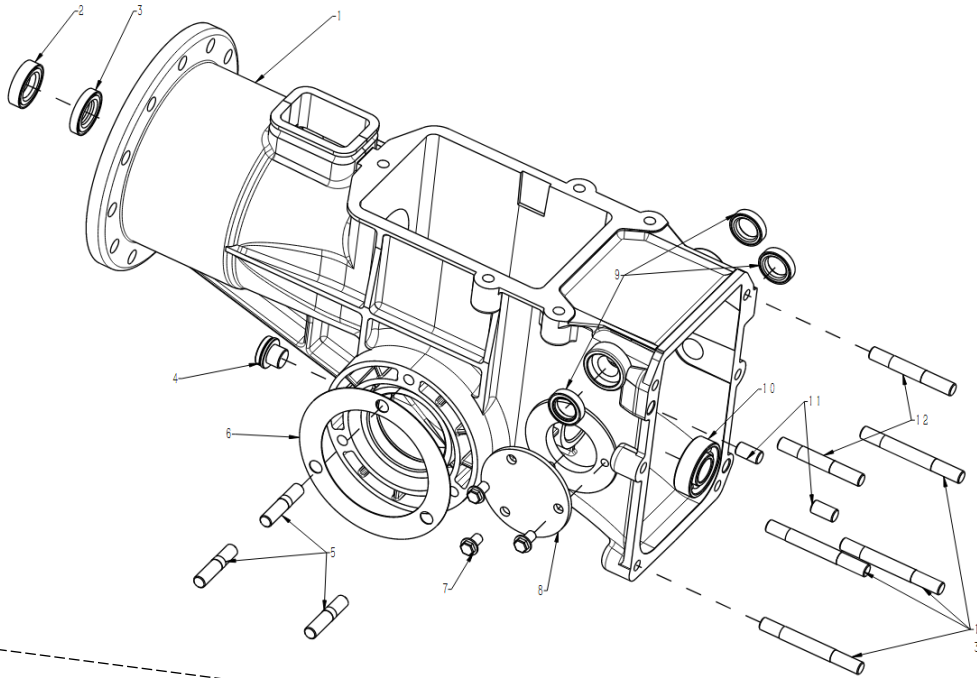
Dispose of your machine in an ecological way. We must not dispose of the machines together with the household waste. Its plastic and metal components can be classified according to their nature and can be recycled.

The materials used to pack this machine are recyclable. Please do not dispose of the packaging in the household waste. Dispose of these packages at an official waste collection point.

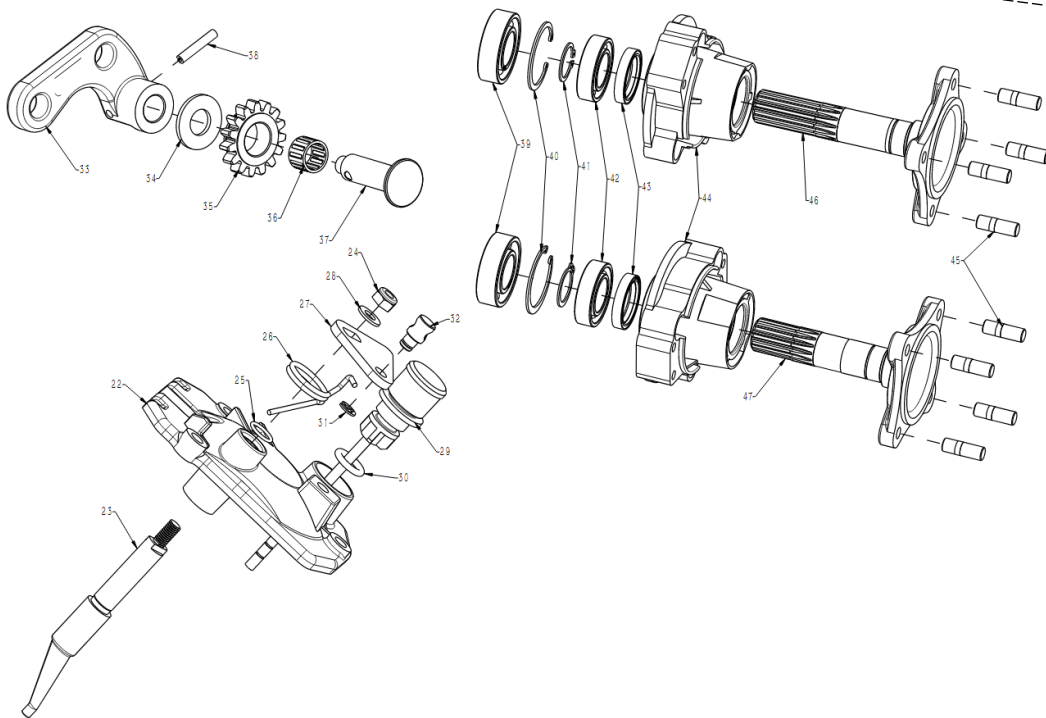
9. EXPLODED VIEW

MTC340

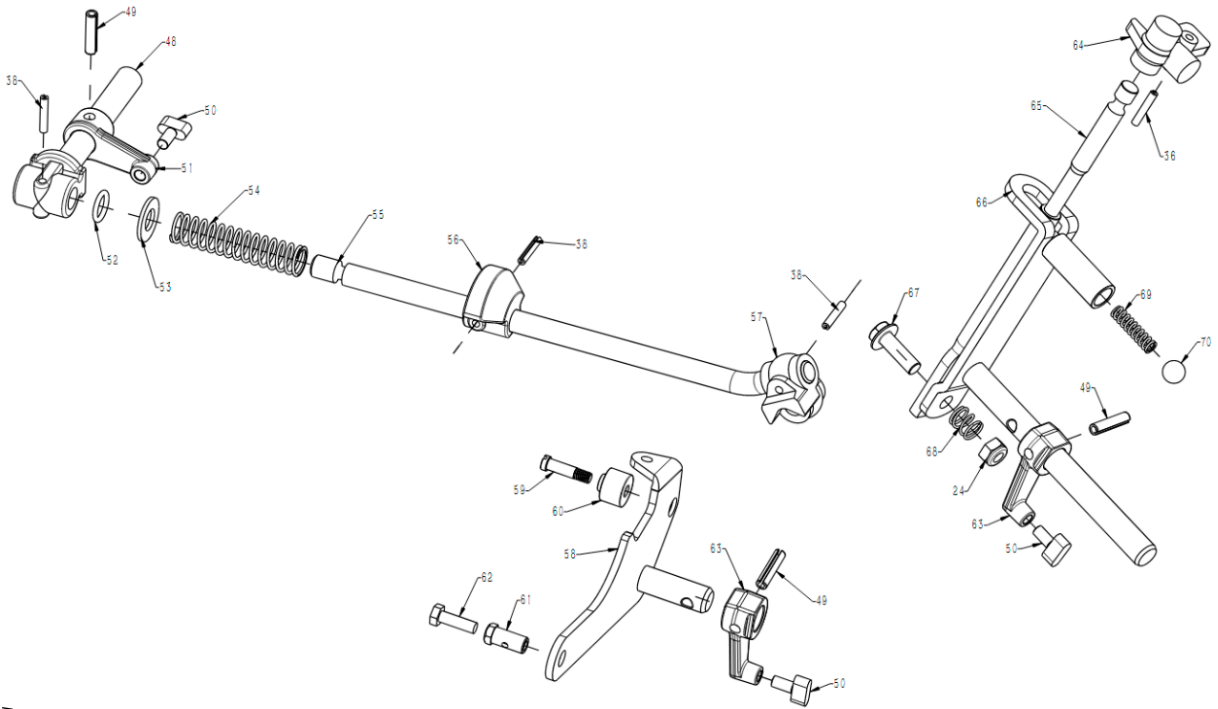
A



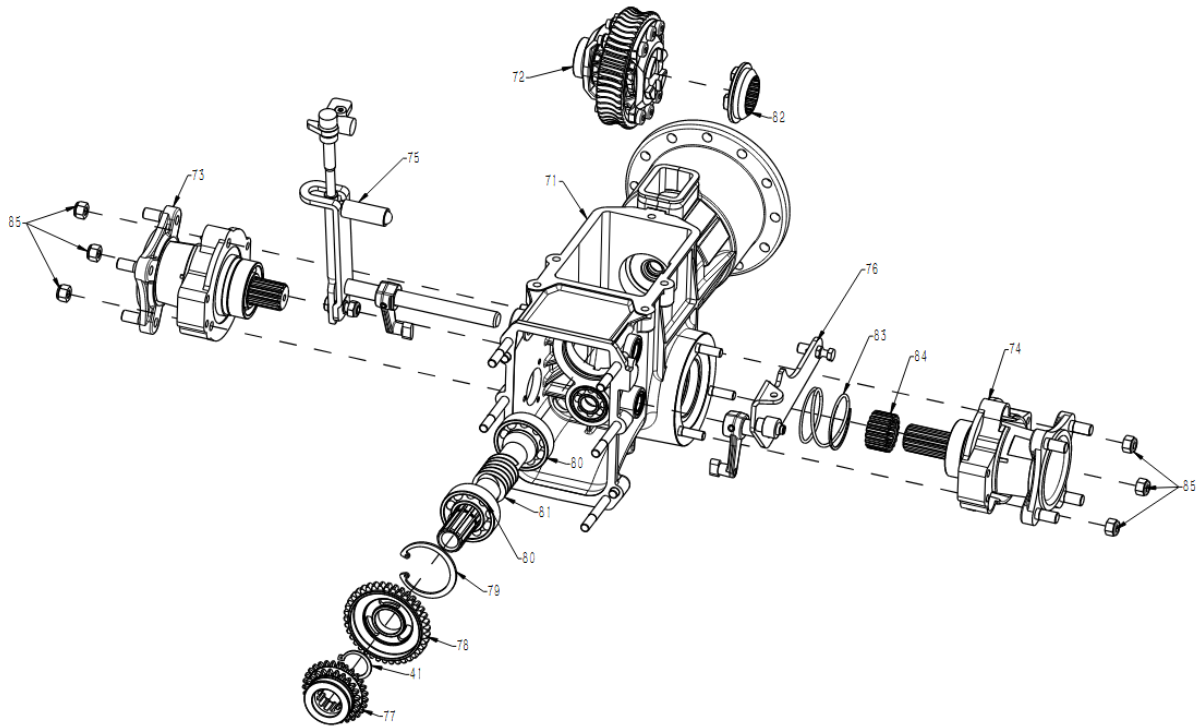
B

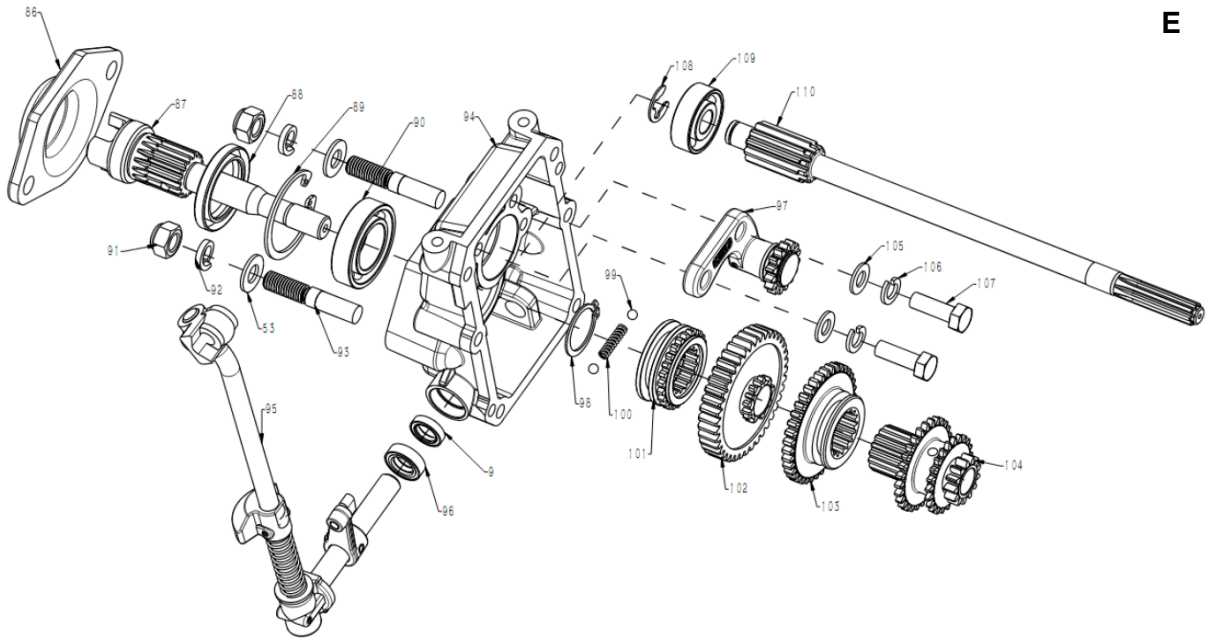


C

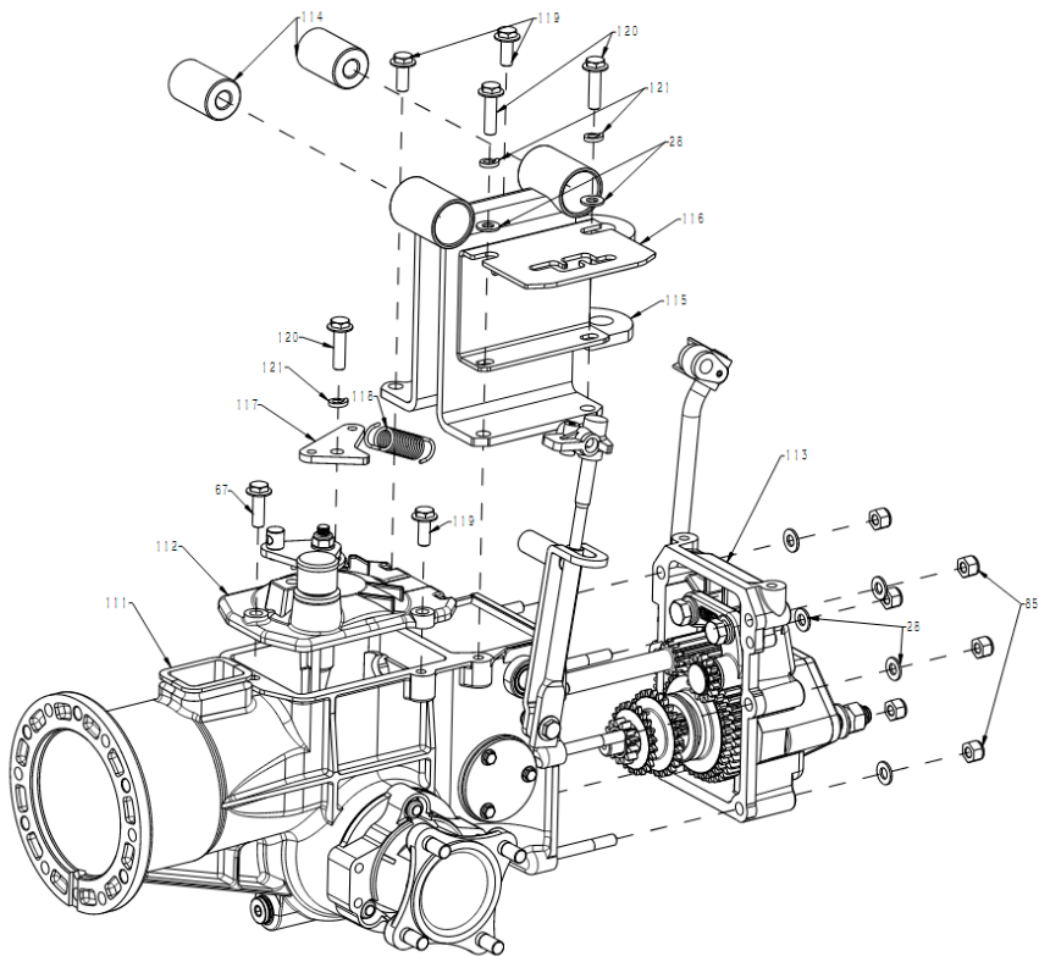


D

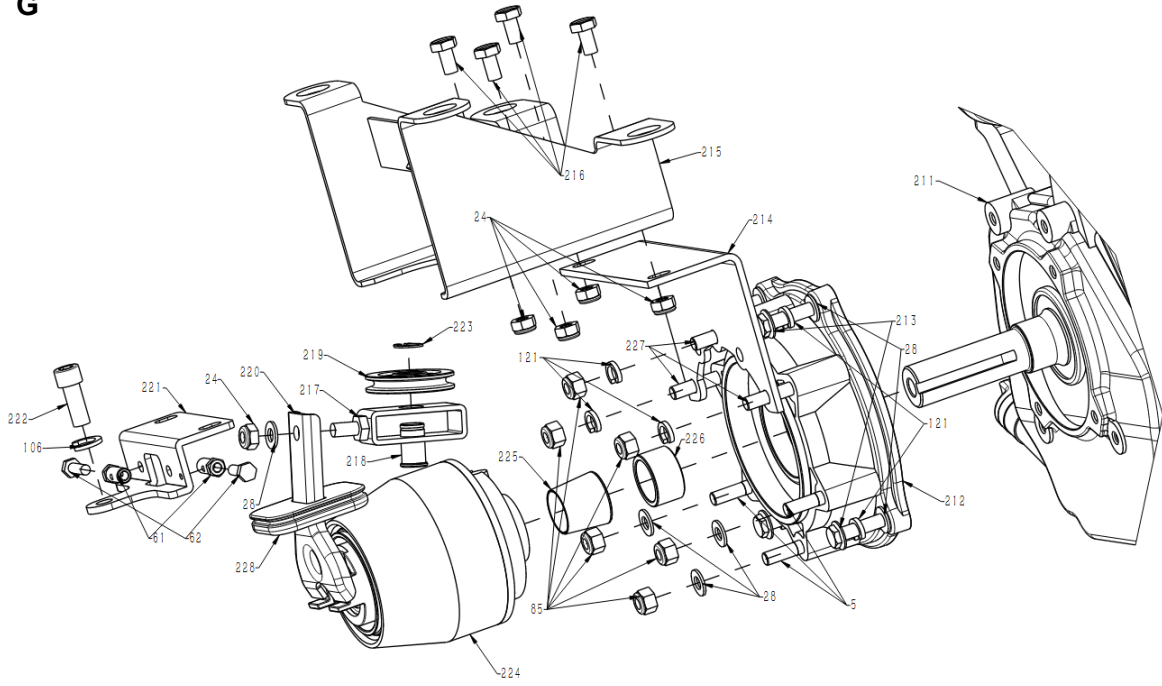




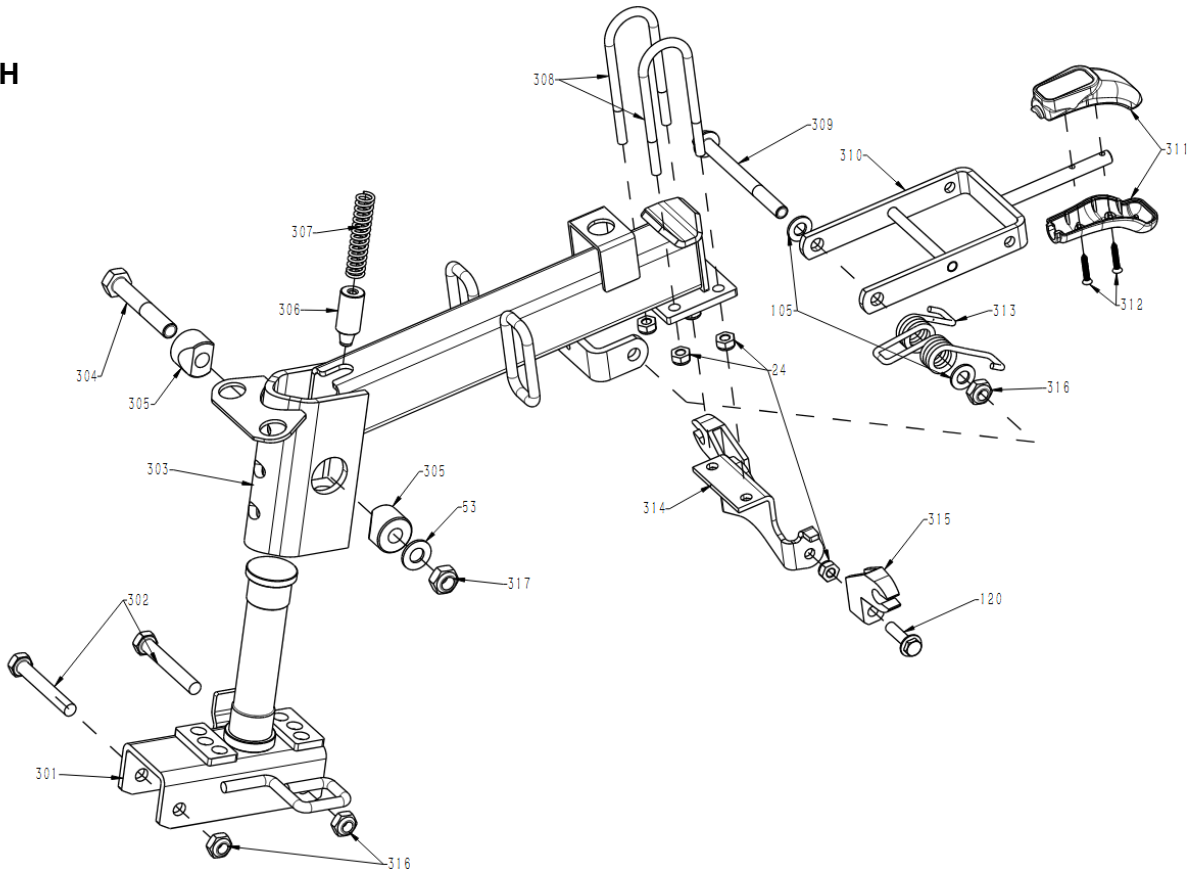
F

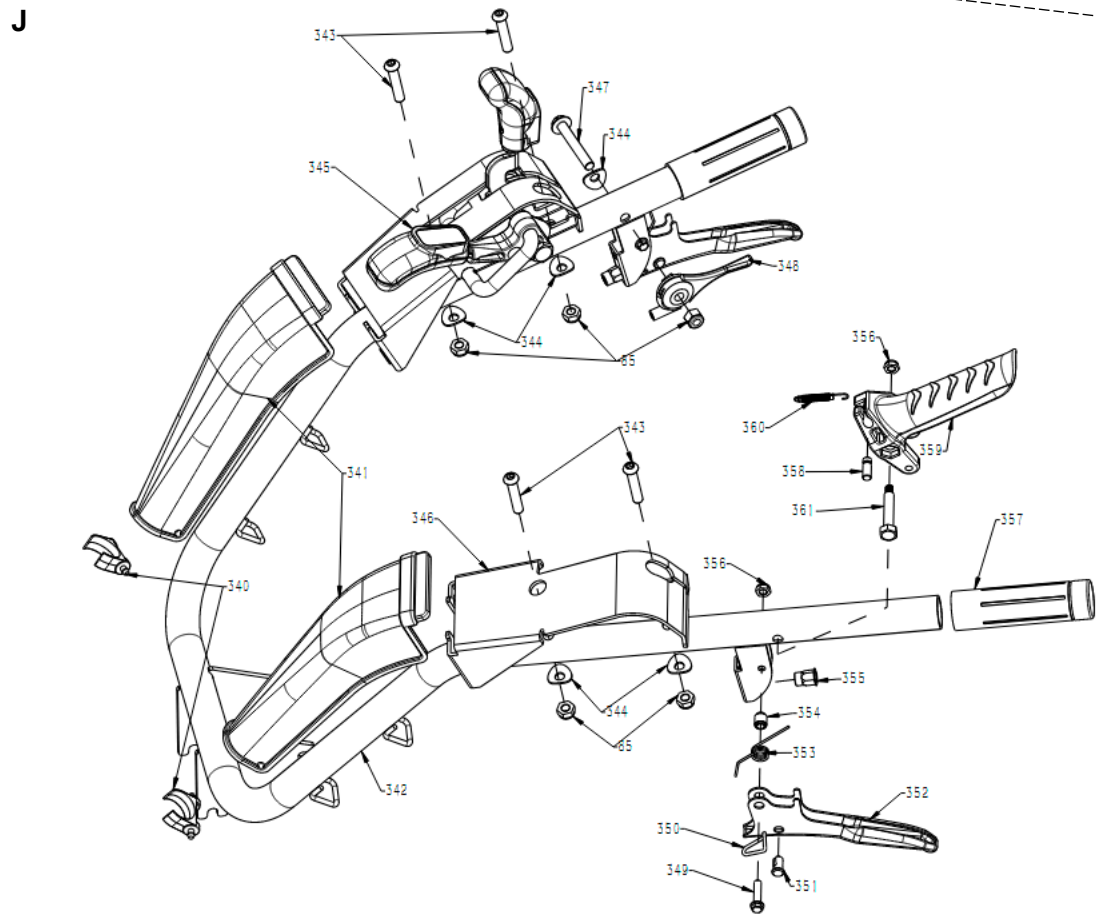
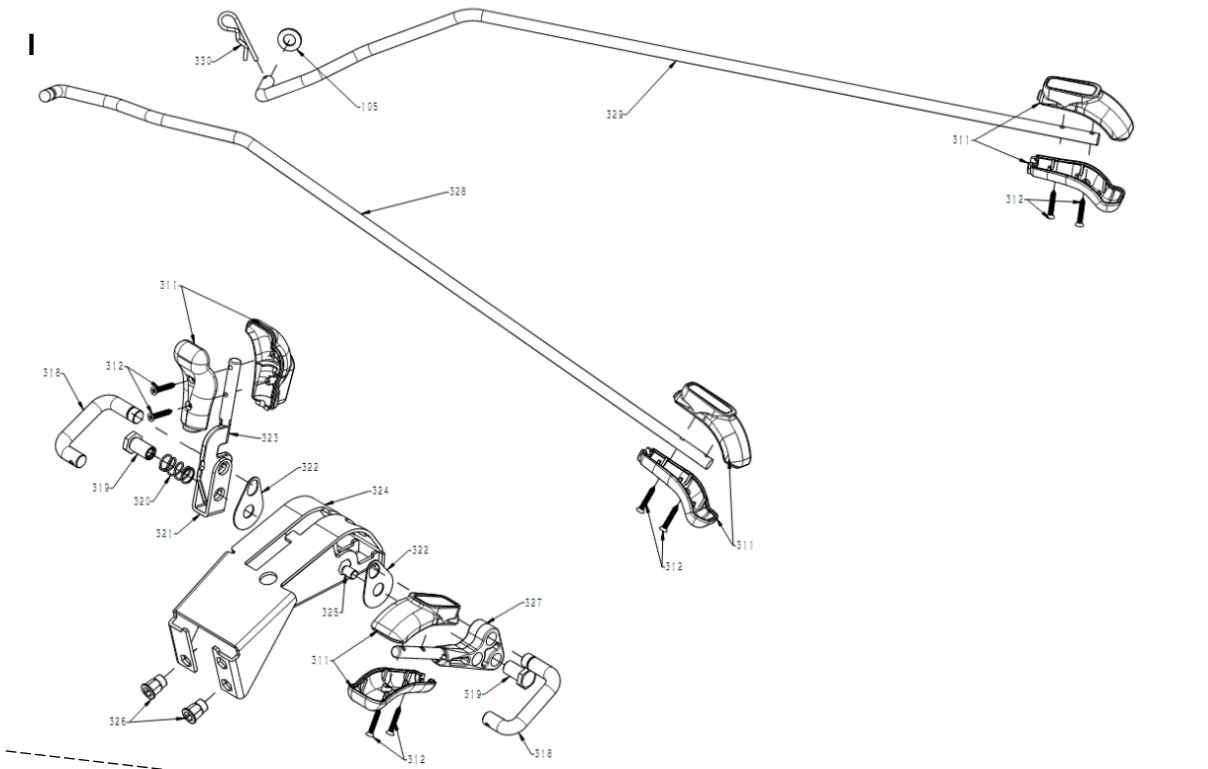


G

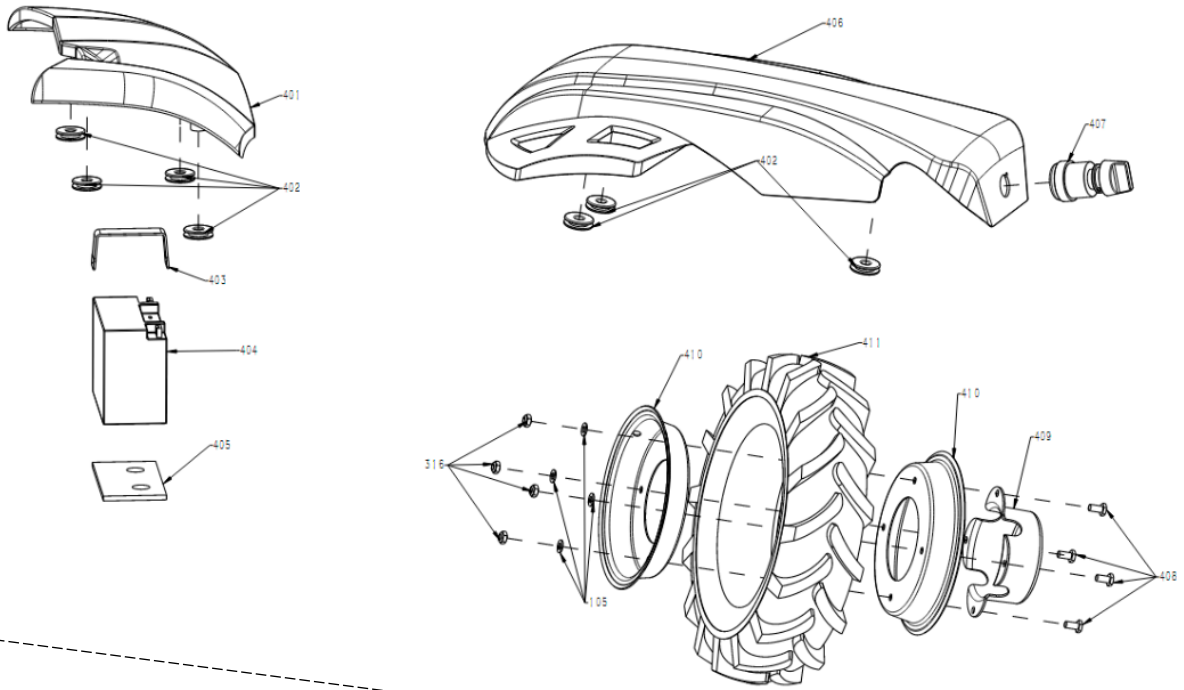


H

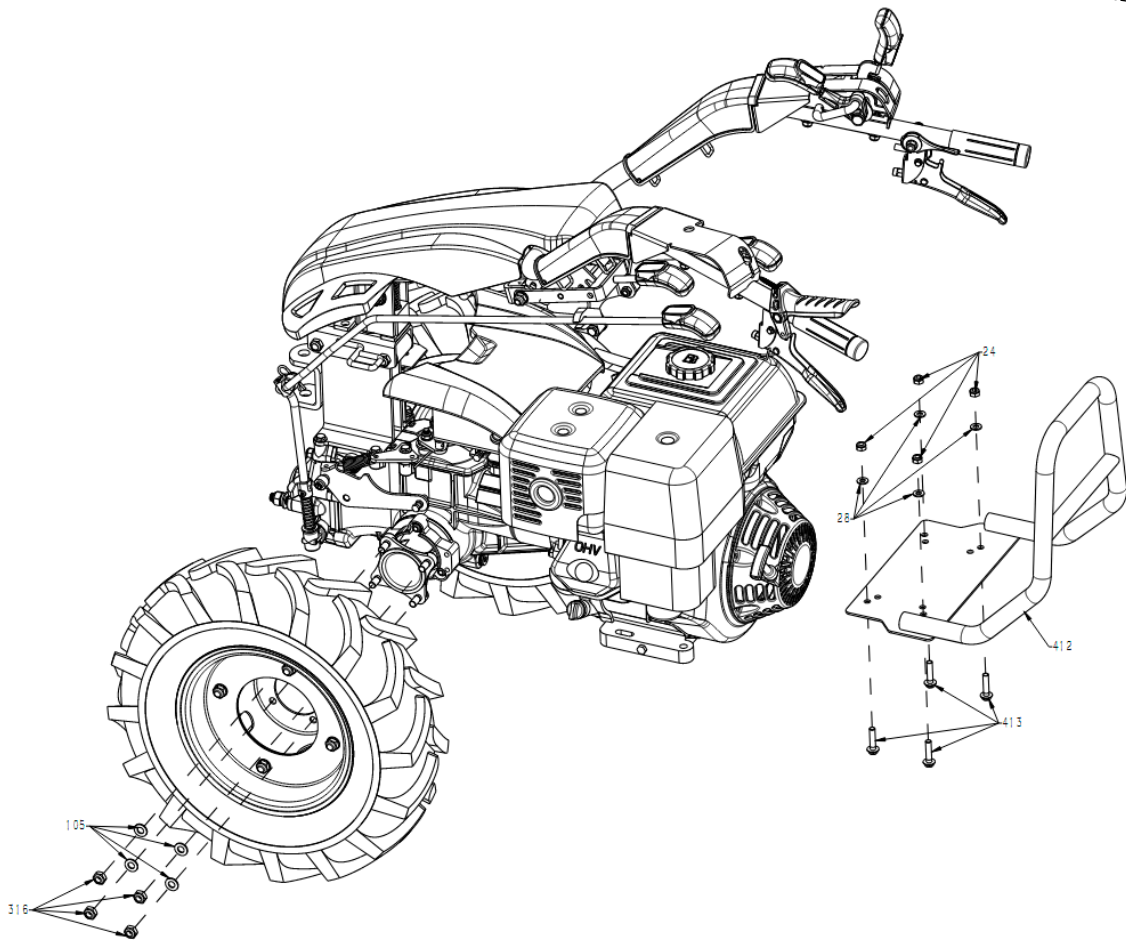




K



L



10. CE CERTIFICATE

DISTRIBUTION COMPANY

MILLASUR, SL

RUA EDUARDO PONDAL, Nº 23 PISIGÜEIRO

15688 OROSO - A CORUÑA

SPAIN



EC DECLARATION OF CONFORMITY

In compliance with the different CE directives, this document confirms that, due to its design and construction, and according to the CE mark printed on it by the manufacturer, the machine identified in this document complies with the pertinent and fundamental health and safety requirements. of the aforementioned EC directives. This declaration validates the product to display the CE symbol.

In the event that the machine is modified and this modification is not approved by the manufacturer and communicated to the distributor, this declaration will lose its value and validity.

Name of the machine: MOTOR TILLER

Model: **MTC340**

Recognized and approved standard to which it conforms:

Directive 2006/42/EC

Tested according to regulations:

**ENISO12100:2010,
EN 709:1997+A4:2009+AC:2012**

Company seal

MILLASUR, S.L.U.
Rúa Eduardo Pondal,23 - Pol.EMP..Sigüeiro
15688-Oroso-A Coruña
Tel.(+34) 981 69 64 65 - Fax (+34) 981 69 08 61
e-mail: millasur@millasur.com
CIF: B-15 749 922

17/10/2022