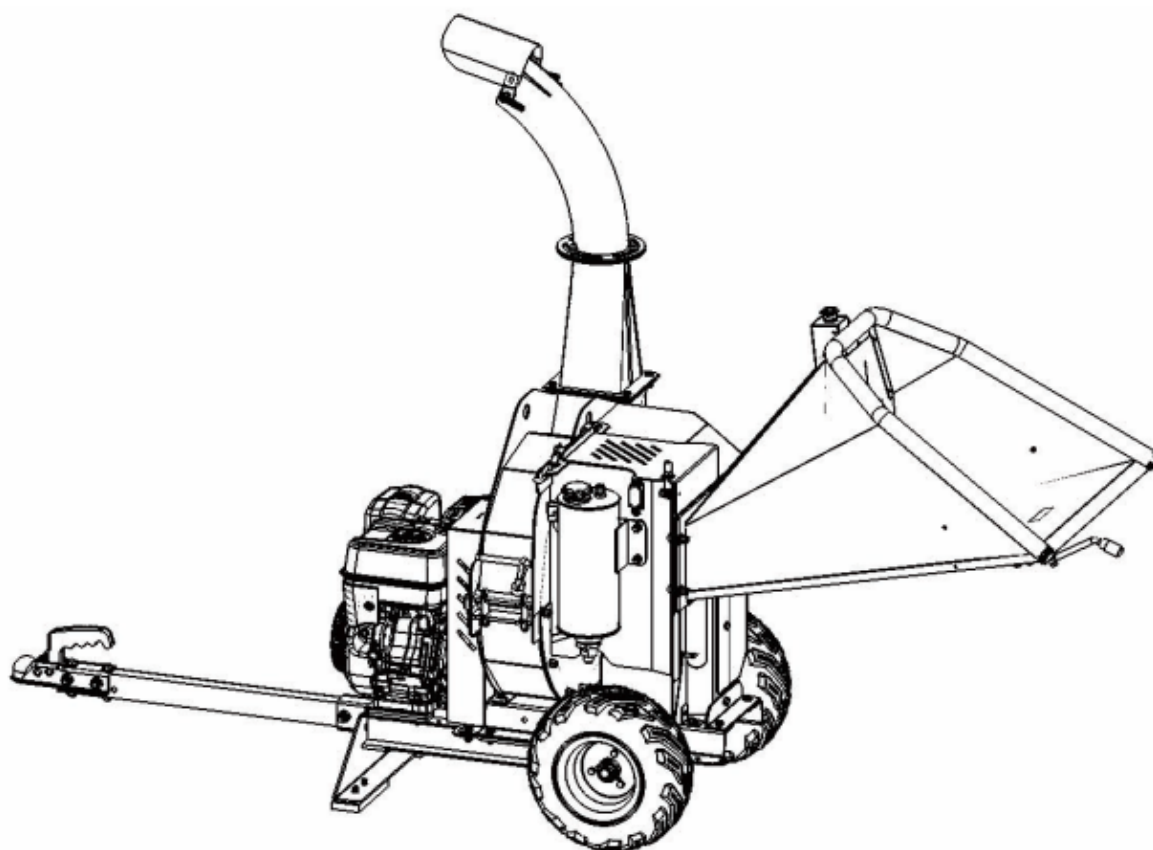


INSTRUCTIONS AND USER MANUAL

BIO300



ALNOVA®

Millasur, SL.
Rúa Eduardo Pondal, nº 23 - Pol. Ind. Sigüeiro
15688 - Oroso - A Coruña - 981 696 465
www.millasur.com



ANOVA wishes to congratulate you for choosing one of our products and guarantees the assistance and cooperation that has always distinguished our brand over time.

This machine is designed to last for many years and to be of great use if used in accordance with the instructions contained in the user manual. We therefore recommend that you read this instruction manual carefully and follow all our recommendations.

For more information or doubts, you can contact us through our web supports such as www.anova.es

INFORMATION ABOUT THIS MANUAL

Pay attention to the information provided in this manual and on the machine for your safety and that of others.

- This manual contains instructions for use and maintenance.
- Take this manual with you when you go to work with the machine.
- The contents are correct at the time of printing.
- The rights to make changes at any time are reserved without affecting our legal responsibilities.
- This manual is considered an integral part of the product and must remain with it in case of loan or resale.
- Ask your dealer for a new manual in case of loss or damage.

READ THIS MANUAL CAREFULLY BEFORE USING THE MACHINE

To ensure that your machine provides the best results, please read the usage and safety regulations carefully before using it.

OTHER WARNINGS:

Incorrect use could cause damage to the machine or other objects.

The adaptation of the machine to new technical requirements could cause differences between the content of this manual and the purchased product.

Read and follow all instructions in this manual. Failure to follow these instructions could result in serious personal injury.

■ Contents

- 1. Safety instructions**
- 2. Technical data**
- 3. Machine parts**
- 4. Commissioning**
- 5. Maintenance**
- 6. Troubleshooting**
- 7. Warranty**
- 8. Environment**
- 9. Exploded view**
- 10. CE declaration of conformity**

1. Safety instructions

Safety labels found on the equipment



Caveat

Read this safety and operating instructions manual before using the wood chipper. Familiarize yourself with the operating and service recommendations to ensure the best performance from your machine.

We reserve the right to discontinue, change and improve its products at any time without notice or obligation to the purchaser. The descriptions and specifications contained in this manual were in effect at the time of printing. The equipment described in this manual may be optional. Some illustrations may not apply to your machine.

Caveat

This machine is designed for wood chipping only and should not be used for any other purpose. It should only be used by trained operators who are familiar with the contents of this manual. It is potentially dangerous to install or use parts other than those of your dealer. The company disclaims all liability for the consequences of such use, which also voids the machine warranty.

Before using the wood chipper

- Operators must be fully trained before using this machine.
- Read and understand the user manual.
- Machine is on level ground; all guards are installed and in good condition.
- The blades are in good condition and safe. All blades are sharpened or replaced in sets.
- All components are checked for tightness.
- Only wooden materials that do not have nails, etc., are fed into the machine.
- The emergency stop cable is properly connected and the switch works.
- The fire extinguisher is available at the appropriate site.

When using the wood chipper

- Always insert the wood from the side, not in the material entry area.
- It is better to have a second trained operator close to the machine.
- Maintain strict discipline at all times and service the machine at specified times.

- Observe the direction of the discharge chute and, if necessary, observe the direction of the wind to prevent debris from being thrown onto the road or where it may affect other people.
- Do not put any part of your body into the feed chute while the machine is running.
- Do not use the machine if it is not in optimal conditions.
- Do not use inside a building or confined space or climb into the supply chute.

Protect yourself and those around you

Caveat

This is a high-powered machine, with moving parts that run on high energy. You must use the machine safely. Using it in an unsafe manner can create a number of hazards for you as well as anyone else in the area. Always take the following precautions when using this machine:

- Please note that the operator or user is responsible for accidents or hazards to other people, their property and themselves.
- Always use the necessary PPE to protect the user. Always wear safety glasses or safety glasses with side shields while using the wood chipper to protect your eyes from possible thrown debris.
- Avoid wearing loose clothing or jewelry, which can get caught in moving parts.
- We recommend wearing gloves while using the wood chipper. Make sure your gloves fit well and don't have loose cuffs or laces.
- Wear shoes with non-slip treads when using your wood chipper. If you have safety shoes, we recommend that you wear them. Do not use the machine barefoot or with open sandals.
- Wear long pants while operating the wood chipper.
- Keep bystanders at least 50 feet away from your work area at all times. Stop the engine when another person or animal approaches.

Safety for children and animals

Caveat

Tragic accidents can occur if the operator is not alert to the presence of children and animals. Children are often attracted to the chipping machine and activity. Never assume that children will remain where you last saw them. Always follow these precautions:

- Keep children and pets at least 50 feet from the work area and make sure they are under the care of a responsible adult.
- Be alert and turn off the machine if children or pets enter the work area.
- Never allow children to operate the wood chipper.

Safety with gasoline machines

Caveat

Gasoline is a highly flammable liquid. It also gives off flammable vapors that can easily ignite and cause a fire or explosion. Never ignore the dangers of gasoline. Always follow these precautions:

- Never run the engine in an enclosed area or without proper ventilation, as engine exhaust contains carbon monoxide, which is an odorless, tasteless, and deadly poisonous gas.
- Store all fuel and oil in containers specifically designed and approved for this purpose and keep them away from heat and open flame, and out of the reach of children.
- Fill the gas tank outdoors with the engine off and allow the engine to cool completely. Do not handle gasoline if you or someone nearby is smoking, or if you start something that could cause it to ignite or explode. Reinstall the fuel tank cap and fuel container cap securely.

- If you spill gasoline, do not try to start the engine. Move machine away from spill area and avoid creating any sources of ignition until gas vapors have dissipated. Clean up spilled fuel to avoid a fire hazard and dispose of waste properly.
- Let the motor cool down completely before storing it in any enclosure. Never store a machine that has gasoline in the tank or fuel container near an open flame or spark, such as a water heater, space heater, clothes dryer, or oven.
- Never make adjustments or repairs with the engine running. Stop engine, disconnect spark plug wire, keeping it away from spark plug to prevent accidental starting, wait 5 minutes before making adjustments or repairs.
- Never alter the engine governor setting. Over-revving the engine is dangerous and will damage the engine and other moving parts of the machine. The engine governor setting has been preset at the factory.
- Keep combustible substances away from the engine when it is hot.
- Never cover the machine while the muffler is still hot.
- Do not run the engine with the air filter or carburetor air inlet cover removed. Removal of such parts could create a fire hazard. Do not use flammable solutions to clean the air filter.
- The muffler and engine become very hot and can cause severe burns. Do not touch.

Overall security

Caveat

Safe use of this wood chipper is necessary to prevent or minimize the risk of death or serious injury. Unsafe operation may create a number of dangers for you. Always take the following precautions when using the machine:

- Your wood chipper is a powerful tool, not a toy. Be very careful at all times. The machine is designed for one purpose, do not use it for any other purpose.
- Learn how to quickly stop the wood chipper.
- Never use the machine on a slippery, wet, muddy or icy surface. Take care to avoid slipping or falling.
- Always refer to the instructions for proper operation and installation of accessories.
- Never use the machine without making sure all guards and other components are in place.
- Never, under any conditions, remove, bend, cut, adjust, weld or otherwise alter the standard parts of the Wood Chipper. This includes all protections. Modifications to your machine could cause personal injury, property damage and will void your warranty.
- If the machine begins to make an unusual noise or vibrates, stop the engine, disconnect the spark plug wire, keeping it away from the spark plug to prevent accidental starting, wait 5 minutes for the engine to cool, and then inspect for damage. Vibration is usually a warning of trouble. Check for damaged parts and clean, repair and/or replace as necessary.
- Never tamper with security devices. Check its correct operation regularly.
- Before performing any maintenance or inspection procedures, stop the engine, disconnect the spark plug wire keeping it away from the spark plug to avoid accidental starting, wait 5 minutes for the machine to cool down.
- Never allow persons unfamiliar with these instructions to use the wood chipper. Allow only responsible persons who are familiar with these rules of safe operation to use your machine.
- Never overload or attempt to chip wood beyond the manufacturer's recommendations. It could cause personal injury or damage to the machine.
- Don't rush or take things for granted. When in doubt about the equipment or its

environment, stop the machine and take some time to check things out.

- Never use the machine under the influence of alcohol, drugs or medication.
- Only use the machine in daylight.
- Stay alert for hidden hazards or traffic.
- Keep all nuts and bolts tight and keep equipment in good working order.

Note: No list of warnings and precautions can be exhaustive. If situations occur that are not covered by this manual, the operator must apply common sense and operate the shredder safely. Contact dealers for help in your area.

2. Technical data

Model	BIO300
Engine	13HP / 15HP four stroke
Energy	Gasoline
Chipper Capacity	4CBM/hour to 6CBM/hour
wood diameter	120mm diameter
Allowable timber width	200mm
Hydraulic pump	10ml/r, 20mpa
Hydraulic engine	0-600rpm, MAX 240N*M
Oil tank capacity	4L
Tire	16*6.5-8
Total height	1560mm
Total length	2150mm
Width	830mm
Weight	293kg
Max RPM roller	2250rpm

3. Machine parts

You may find it helpful to become familiar with the controls and features of the wood chipper. If you have any questions, please contact the distributors in your area.

Automatic feed speed bar



The bar can adjust the rotation speed of the feed roller (from 0 to 600 RPM).

Automatic feed function handle



By operating the handle, there are 3 functions of the feed roller: forward, reverse, grab.

Blade Status Check



By loosening these 4 bolts, you can open the chamber to check the condition of the blades and fans.

4. Commissioning

Caveat

- Read and understand all instructions, safety precautions and/or warnings listed in the general safety rules before using the machine. If you have any doubts or questions about the correct or safe method of doing anything in this manual, please contact your nearest official dealer.
- When using the wood chipper, make sure you are standing in the safe operating area (ie operator zone). You must remain in the secure area at all times when it is in operation. Never place any part of your body in a position that will cause an unsafe operating condition.
- Before loading and using the wood chipper, always wear protective gear, including safety glasses, hearing protection, tight-fitting gloves without laces or loose cuffs, and steel-toed shoes.
- Learn the correct and incorrect methods of wood chipping. Never use an incorrect or unsafe method.

Process

1. Check the condition of the engine
2. Fill the engine with the correct type of engine oil and gasoline (according to the engine

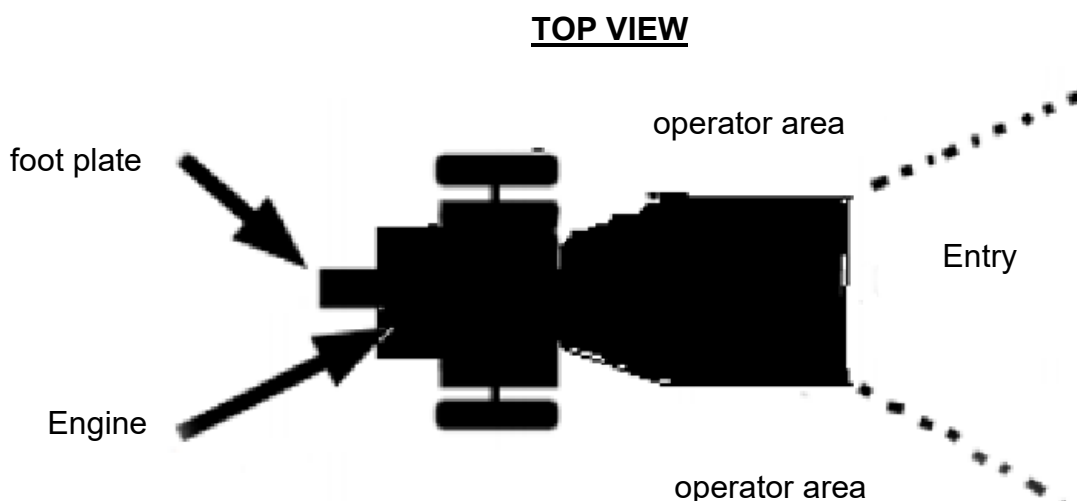
- manual).
3. Check the condition of the blades, make sure that the blades are not excessively worn and that the steering wheel is not blocked.
 4. Check that the tank has enough hydraulic oil #46 (about 2/3 of the volume).
 5. Make sure the feed rate switch is in the "0" position.
 6. Make sure the feed function handle is in the "STOP" position.
 7. Check the condition of the bolts if they are all tight.
 8. Check that the safety switch is running.

Start up

1. Please place your wood chipper on a flat and dry ground, make sure the machine cannot be moved.
2. Make sure the fuel shutoff valve is in the "ON" position.
3. Move the choke control lever to the "THROTTLE" (should only be necessary if the engine is cold).
4. Move the throttle control lever to the "FAST" position.
5. Recoil Starting: Turn the ignition switch to the "On" position. Grasp the recoil starter handle and pull slowly until resistance is felt. Let the cable retract a little, then pull the cable quickly to start the engine. Normally one or two pulls start the motor.
6. Electric Start: Turn and hold the key in the start position until the engine starts, then let the key return to the run position.
7. Move the choke control lever (if used for cold engine) slowly back to the "RUN" position when the engine is running smoothly.
8. If the wood chipper has not been running (cold engine), warm up the engine by running the engine at half throttle for 3 to 4 minutes, then advance the engine throttle control to full speed.
9. Set the feed function handle to the "Forward" position.
10. Adjust the feed speed bar to the proper speed.

Stop

1. Adjust the feed speed bar to the "0" position.
2. Set the feed function handle to the "STOP" position.
3. Move the throttle lever to slow motion.
4. Recoil Starting: Turn the ignition switch to the OFF position.
5. Electric Start: Turn the key to the OFF position.



Wood chipping

Note: The diameter of the woods and branches should not exceed 120mm.

Caveat

Do not put your hands into the intake duct when chipping. This is a very unsafe method and could result in injury to your hands.

Do not reach over or cross the rail while the wood chipper is running. This is a method that could cause personal injury, even death.

When it's locked

If the roller stalls while cutting wood or branches, the motor should be stopped, the wood stuck in the roller removed, then the motor restarted and re-chipping.

5. Maintenance

Regular maintenance is the way to ensure the best performance and long life of your machine. Consult this manual for proper maintenance procedures.

Caveat

Before performing any maintenance or inspection procedures, stop the engine, unplug the power cord and wait 5 minutes to allow all parts to cool. Disconnect the spark plug wire to prevent accidental starting. Disconnect battery terminals (electric start only).

Maintenance procedure

Process	Before each use	Every 3 hours	every 25 hours	every 100 hours
Check engine oil level	Δ			
Check the general equipment	Δ			
Check that the wedge is sharp	Δ			
check belts	Δ			
Check tire pressure			Δ	
Clean exterior and engine cooling	First time use/ Every 5 hours of use		Δ	
Change engine oil			Δ	
Replace air filter			Δ	
Replace the spark plug				Δ

Engine service

See the engine owner's manual for information on engine maintenance. All the bearings parts of your chipper are sealed parts and must be well oiled to last the life of your machine with normal use.

Remember to oil the rack and pinion as the entire rack and pinion must be oiled before each use.

6. Troubleshooting

Most problems are easy to fix. See the Troubleshooting Table below for common problems and their solutions. If you continue to have problems, contact your nearest official dealer.

Caveat

Before performing any maintenance or inspection procedures, stop the engine, wait five minutes to allow all parts to cool. Disconnect the spark plug wire, keeping it away from the spark plug.

SYMPTOM	POSSIBLE CAUSE
The motor does not start.	<ul style="list-style-type: none"> • Is the ignition switch in the "ON" position? • Is the fuel shutoff valve open? • Are you using clean, fresh gas? If the gas is old, change it. • Use a fuel stabilizer if holding fuel for more than 30 days. • Is the spark plug clean? If the spark plug is dirty or cracked, replace it. If it's oily, leave it out, put a rag over the plug hole and pull the recoil cable a few times to blow the oil into the cylinder, then wipe the plug clean and reinsert it.
Engine lacks power or is not working correctly.	<ul style="list-style-type: none"> • Check that the throttle lever is in the "Run" position. • Is the air filter clean? If it is dirty, replace it following the procedure in the engine manufacturer's owner's manual. • Is the spark plug clean? If it is dirty or cracked, replace it. If it's oily, leave it out, put a rag over the plug hole and pull the recoil cable a few times to blow the oil out of the cylinder, then wipe the plug clean and reinsert it. • Are you using clean, fresh, unleaded gas? If it's old, replace it. Use a fuel stabilizer if you keep the fuel for more than 30 days. • Does your engine have the proper amount of clean oil? If it is dirty, replace it following the procedure in the engine manufacturer's owner's manual. • Check the oil level and adjust it as necessary.
the engine smokes	<ul style="list-style-type: none"> • Check the oil level and adjust it as necessary. • Check the air filter and clean or replace it if necessary. • You may be using the wrong oil, too light for the temperature. See the Engine Owner's Manual for detailed information. • Clean the cooling fins if they are dirty.
The machine does not seem to have full chipping power	<ul style="list-style-type: none"> • Straps may be too loose and slip. Adjust or replace straps as needed.

7. Warranty

For this tool the company provides the end user - regardless of the obligations of the retailer resulting from the purchase contract - with the following guarantees:

The warranty period is 24 months from the delivery of the device which must be approved by the original purchase document. For commercial use and rental use, the warranty period is reduced to 12 months. Excluded from this warranty are wear parts and defects caused by the use of inappropriate accessories, repair with parts that are not original manufacturer parts, use of force, shock and breakage, as well as mischievous overloading of the motor. Warranty replacement only includes defective parts, not complete devices. Warranty repair will be carried out exclusively by authorized dealers or company customer service. In the event of any intervention by unauthorized personnel, the guarantee will be void.

All shipping costs, as well as any other subsequent costs, will be borne by the customer.

8. Environment



Protect the environment. Recycle the oil used by this machine by taking it to a recycling center. Do not pour used oil into drains, land, rivers, lakes or seas. Please dispose of your machine in an ecological way. We must not dispose of machines together with household waste. Its plastic and metal components can be sorted according to their nature and recycled.

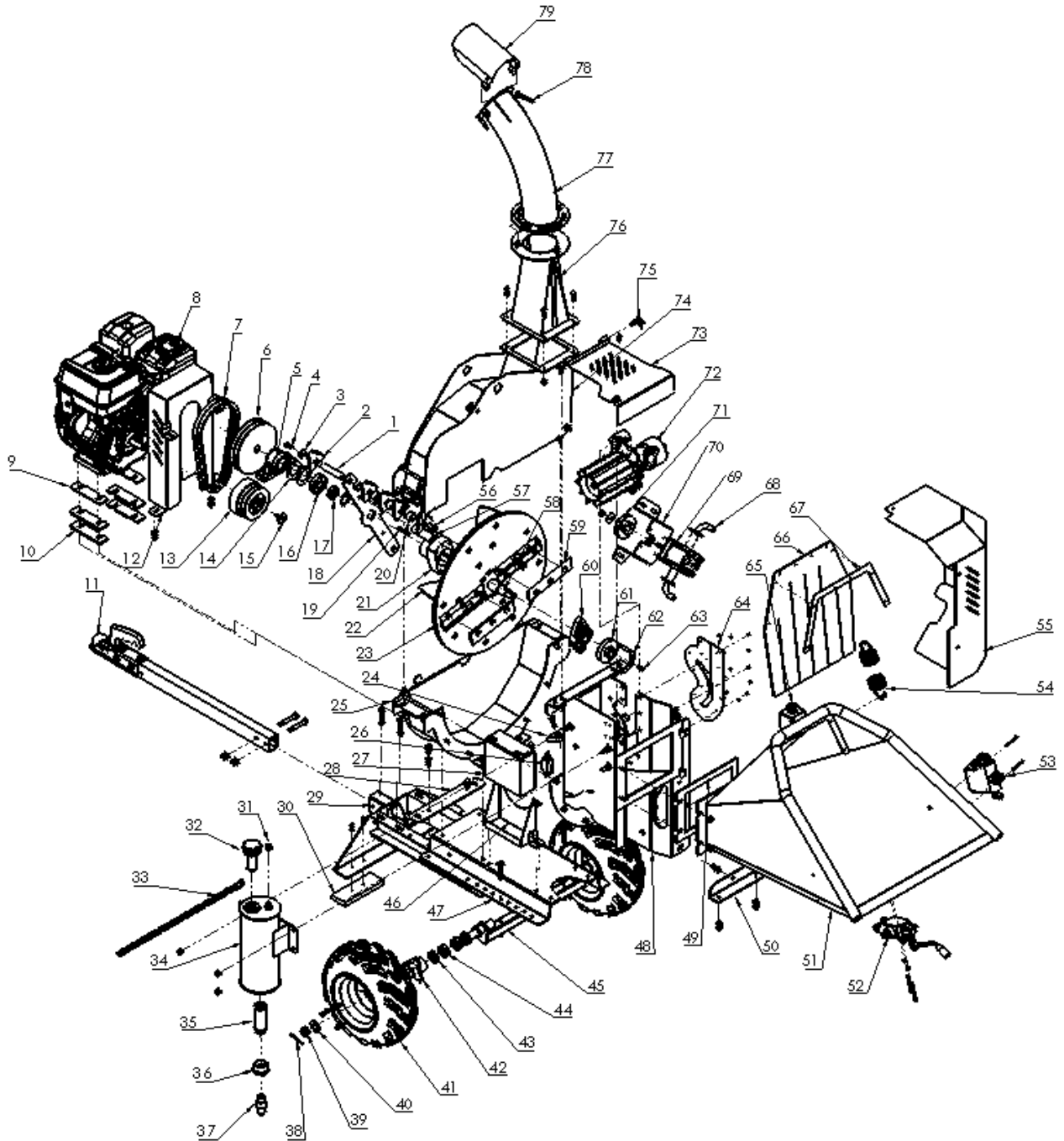


The materials used to pack this machine are recyclable. Please do not dispose of the packaging in household waste. Please dispose of these packages at an official waste collection point.

9. Exploded view

ALNOVA

BIO300



10. CE declaration of conformity

DISTRIBUTION COMPANY

MILLASUR, SL
RUA EDUARDO PONDAL, Nº 23 PISIGÜEIRO
15688 OROSO - A CORUÑA
SPAIN



ALNOVA

EC DECLARATION OF CONFORMITY

In compliance with the different CE directives, it is hereby confirmed that, due to its design and construction, and according to the CE mark printed by the manufacturer on it, the machine identified in this document complies with the relevant and fundamental health and safety requirements. of the aforementioned EC directives. This declaration validates the product to display the CE symbol.

In the event that the machine is modified and this modification is not approved by the manufacturer and communicated to the distributor, this declaration will lose its value and validity.

Name of the machine: BIO-SHREDDER

Model: BIO300

Recognized and approved standard to which it conforms:

directive2006/42/EC
2014/30/EU

Tested according to standards:

ISO 12100:2010
ISO 14120:2015
ISO 4413:2010
ISO 14982:2009

Company
seal

MILLASUR, S.L.U.

Rúa Eduardo Pondal,23 - Pol.Emp..Sigüeiro
15688-Oroso-A Coruña

Tel.(+34) 981 69 64 65 - Fax (+34) 981 69 08 61

e-mail: millasur@millasur.com

CIF: B-15 749 922

07/19/2021