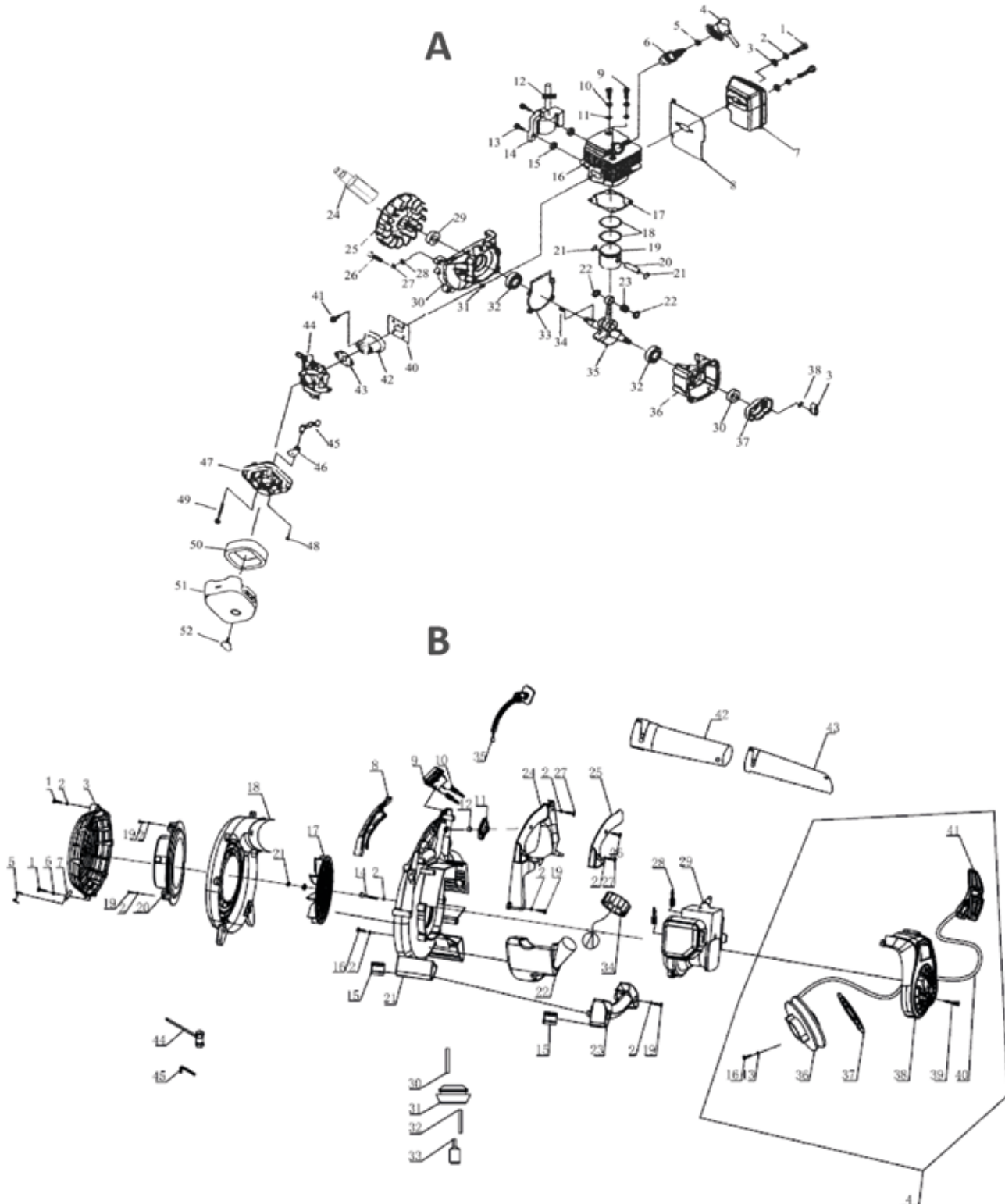


ADAPTABLES AL MODELO SG1C

ANOVA
SG1C



ADAPTABLES AL MODELO SG1C

Ref.	Descripción	Ref.Despiece
SG1C-01	BOBINA SG1C-SG2C	A14
SG1C-02	CILINDRO	A16
SG1C-03	JUNTA CILINDRO	A17
SG1C-04	AROS PISTON SG1C-D26C	A18
SG1C-0493	CARTER TRASERO	A36
SG1C-05	PISTON SG1C	A19
SG1C-0503	JUNTA ADMISION BRIDA	A40
SG1C-0518	JUNTA ADMISION	A43
SG1C-06	BULON PISTON SG1C	A20
SG1C-07	PRESILLA PISTON	A21
SG1C-0741	BRIDA	A42
SG1C-08	SEPARADOR RODAMIENTO PISTON	A22
SG1C-09	RODAMIENTO VIELA - PISTON,JAULA AGUJAS	A23
SG1C-10	VOLANTE MAGNETICO	A25
SG1C-11	RETEN CIGÜEÑAL	A29
SG1C-12	CARTER VOLANTE	A30
SG1C-13	JUNTA CARTER	A33
SG1C-14	CIGÜEÑAL SG1C	A35
SG1C-15	CONJUNTO TRINQUETE	A37-38-39
SG1C-16	MUELLE Y TRINQUETE ARRANQUE	A-38-39
SG1C-17	TURBINA VENTILADOR	B17
SG1C-20	FILTRO DE AIRE COMPLETO	A47-52
SG1C-21	MUELLE DE ARRANQUE SOPLADOR SG1C-D26C-SG2C	B37
SG1C-22	TIRADOR AIRE SOPLADOR SG1C	A45-46
SG1C-5280	PASADOR GATILLO	B12
SG1C-5302	TUBO INTERMEDIO	B42
SG1C-5305	GATILLO ACELERADOR	B11
SG1C-5306	TUBO FINAL	B43
SG1C-5316	DEPOSITO GASOLINA	B22
SG1C-5349	POLEA ARRANQUE SG1C,SG2C	B36
SG1C-5403	TAPA ARRANQUE	B4
SG1C-6357	CARBURADOR=PG2C-SG2C	A44

ANOVA[®]
forest & garden products